

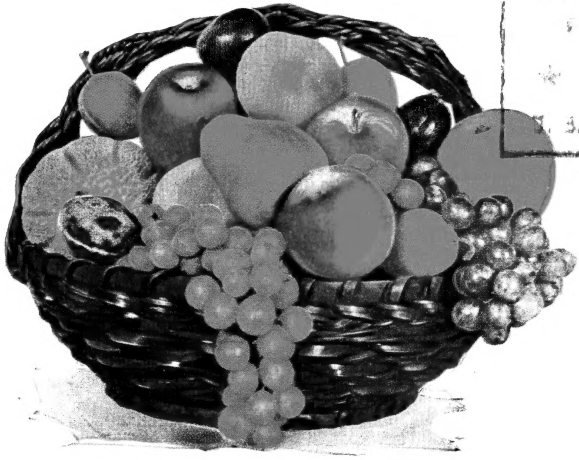
Historic, Archive Document

Do not assume content reflects current scientific knowledge, policies, or practices.

62.71



1943 PLANTING GUIDE



LIBRARY
 RECEIVED
 ★ JAN 23 1943 ★
 U. S. Department of Agriculture

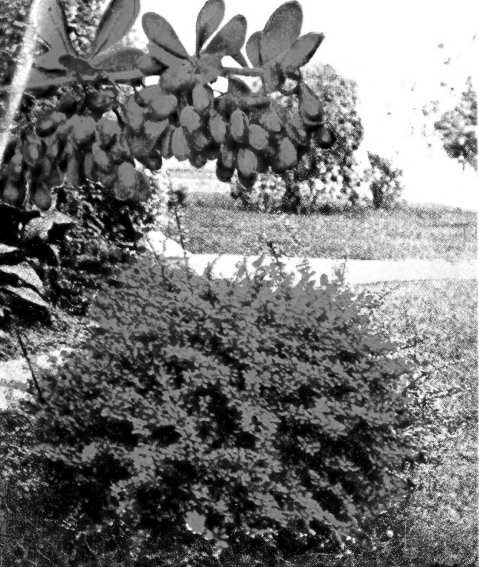
Carlton Nursery Company

Extensive Growers of

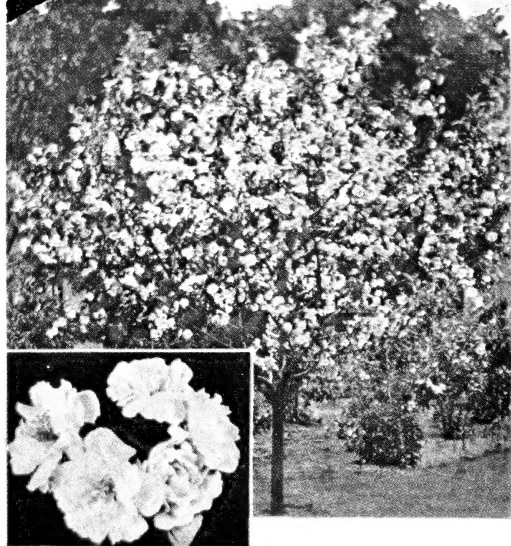
GENERAL NURSERY STOCK

for "Over Half a Century"

FOREST GROVE - - - - OREGON



Red Japanese Barberry



Bechtel's Double Flowering Crab

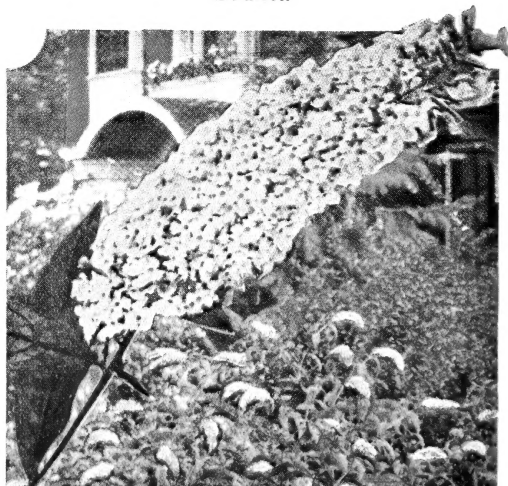


VISIT OUR SALESYARDS FOR BETTER EVERGREENS
(FOREST GROVE near Portland — MEDFORD in Southern Oregon)

Paul's Double Flowering Thorne



Buddleia



OVER HALF A CENTURY OF DEPENDABLE SERVICE

It is with great pride and satisfaction that we offer commercial planters, orchardists, home owners, and fruit stand operators the most complete selection in the West, of high quality, thrifty, hardy nursery stock, grown from the finest certified, bud selected fruit on the Pacific slope and from the newest certified proven sorts. **We offer no untried varieties, each has a record of proven production.**

The Broadest Guarantee Ever Made . . .

We guarantee every plant, tree, or shrub that we ship out to be free from disease, true-to-name, and to arrive in perfect growing condition. If for any reason whatever, you are not satisfied that you have received 100 cents in value for every dollar sent us, we will refund your money. Our policy of "Every Customer a Satisfied Customer" means all that it implies, and we are here to give **absolute satisfaction.**

NEW LOCATION

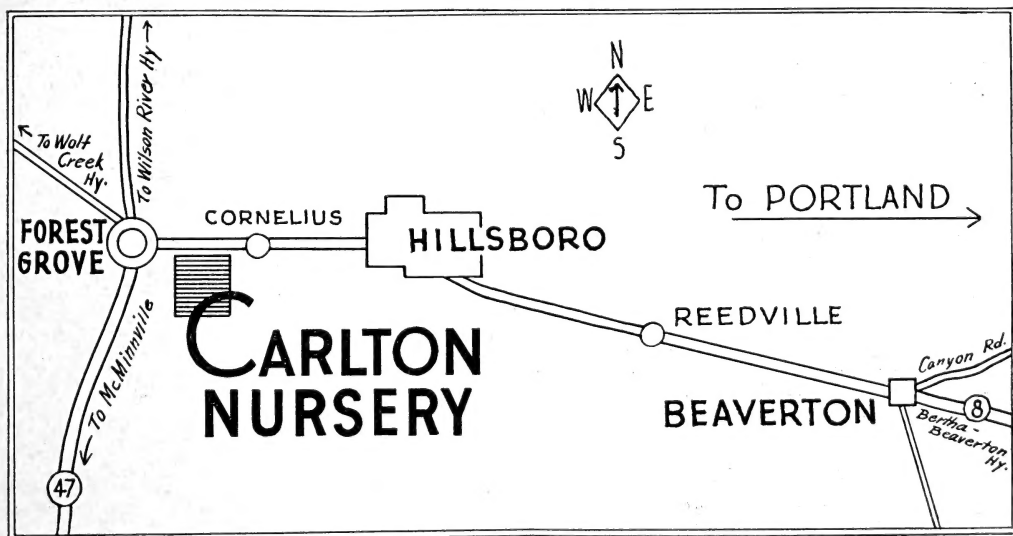
For 52 years our headquarters have been located in Carlton, Oregon. NOW, for better service to our customers we have moved our Office and Packing Plant 21 miles nearer our Nursery Fields and Propagation Grounds.

DISPLAY and SALESYARD, OFFICE and PACKING PLANT, one mile east of Forest Grove on Portland Forest Grove Highway.

New Mail Address—CARLTON NURSERY CO., FOREST GROVE, OREGON.

WE PAY ALL SHIPPING CHARGES

In cooperation with the war effort, we encourage you to take advantage of our Freight Paid Service. However, if you are in the vicinity of Forest Grove, or plan a trip to the seashore by way of Wolf Creek or Wilson River highway—please visit our Display Grounds. You may save up to 10 per cent on your Nursery Stock by calling at our Forest Grove Salesyard for your needs, thus enabling us to save on packing materials and freight.



Information

PLANTING SEASON: Trees and shrubs are best planted during Fall and Winter season; however, excellent results are obtained in the Spring months.

TIME TO ORDER: Order now while our stock is complete and you will receive the finest of selections.

GUARANTEE: We warrant our stock to be true to name and will replace free of charge or refund purchase price, should any prove untrue to label. It is, however, understood between the purchaser and ourselves that in no case will we be held liable for a greater sum than the original price paid for the trees that prove untrue.

TERMS OF PAYMENT: Customers will please forward cash with the order. If to be sent C. O. D., send 25 per cent cash with the order.

SUBSTITUTION: Please state when ordering an assortment whether substitution will be allowed, as we feel at liberty, when no instructions accompany the order, to use similar or better varieties when we are out of the kinds named. We never substitute on large orders for commercial planting without consulting the customer.



A four-year-old apple tree showing growth and heavy bearing quality of Carlton trees.

Dependability

The **CARLTON NURSERY COMPANY** of **FOREST GROVE, OREGON**, have for the past 53 years been engaged in the growing and shipping of **HIGHEST GRADE NURSERY STOCK**, to all sections of the country. **DEPENDABILITY** in trees is not measured by Price; however this list contains Values heretofore not found offered by Reliable Nurserymen.

Certified Bud Selection

SUCCESS IN FRUIT AND NUT TREE PLANTING depends solely on the selection of **CERTIFIED BUDS** from Trees producing quality as well as quantity and to have been budded on the proper variety of Root systems adaptable to various soil conditions. **WE ACCEPT THIS RESPONSIBILITY.**

OUR STOCK is grown by cultivation. The deep, rich sandy loam of our **VALLEY NURSERIES** at **FOREST GROVE** enable us to supply strong, hardy, vigorous trees, with highly developed Root Systems.

We have thousands of satisfied customers and solicit inquiries from new customers and **COMMERCIAL PLANTERS**. We assure you that your order will receive our careful personal service and attention. Submit your order today.

Customers

You can plant our stock with safety. Order today. We accept the solemn obligation of Guiding Home and Commercial Planters.

PLANTING INFORMATION—Pages 29, 30, 31 and 32.

FREE A VALUABLE GIFT

“Select Yours”

On orders of **\$5.00** to **\$7.50**, you may select any **ONE** of the following Free Premiums. Premiums.

On orders of **\$7.50** to **\$10.00**, you may select any **TWO** Free Premiums.

On orders of **\$10.00** and up, you may select any **THREE** Free Premiums.

- No. 1—1 Fruit Tree.
- No. 2—1 Flowering Plum.
- No. 3—1 Flowering Peach.
- No. 4—1 Flowering Crab.
- No. 5—1 Double Red Hawthorne.
- No. 6—1 Coralberry.
- No. 7—10 Asparagus.
- No. 8—25 Marshall Strawberry.
- No. 9—2 Grapes.
- No. 10—2 Berry Plants.

Please Give Second Choice.

Orchardists — Commercial Planters

This catalogue quotes prices on 50 trees and less only. Please write for **SPECIAL COMMERCIAL PRICES ON FIFTY (50) OR MORE TREES.**

PEARS

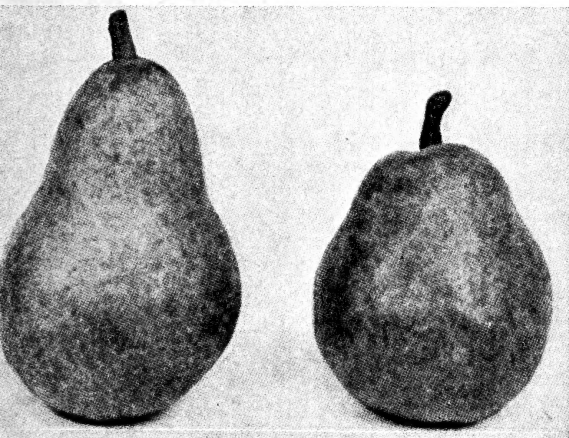
MAKE 25 TO 30% MORE PROFITS WITH CARLTON PEARS

The pear thrives over a wide range—being able to stand more summer heat than the apple. The French pear root also withstands heavy wet soils much better than most fruits. The popular Bartlett rules supreme as a summer pear, but some of our fall and winter varieties are even finer in quality and flavor, and all lovers of fine pears should include some of these in their home gardens. Unlike most other fruits, the pear develops much better quality when ripened off the tree, and the fruit should be picked before it begins to soften.

Two Types of Bartlett Pears

Many Bartlett orchards produce the undesirable short type of fruit shown at the right. Our budwood is selected only from trees producing the longer type fruit, or Nelson Strain. Highly recommended by canners in California.

This type of Bartlett will pay 25 to 30% better than the regular type Bartlett.



Nelson Strain Bartlett Average Short Neck Bartlett

FREIGHT PAID PRICES ON PEARS

Grown on True French Root

	1 to 10	11 to 25	26 to 50
2 to 3 ft	45c	35c	
3 to 4 ft.....	65c	55c	45c
4 to 6 ft.....	75c	65c	55c

(2 to 3 ft. trees sold in multiple of 10 only.)

Orchardists—Please write for special quantity prices.

Best Shipping Sorts: Bartlett, Bosc, Comice, Anjou, Winter Nellis.

Cannery Sort: Bartlett.

Special Note: The New CANNERY RULING eliminates many of the short necked strains of Bartletts. Plant our new strain of Bartlett which easily qualifies in length and diameter.

Sorts marked with a star (*) will keep well through winter months.

CLAPP'S FAVORITE—Large, resembles Bartlett, excellent flavor.

BARTLETT—Large, golden yellow, juicy, buttery.

FLEMISH BEAUTY—A large, juicy, rich, heavy bearer.

***BEURRE D'ANJOU** — Large, yellow with blush, a good keeper.

***DOYNNENNE DU COMICE**—Large yellowish red, rich and juicy.

SECKLE—Small, brownish green, highly flavored.

BEURRE BOSCH—Large, cinnamon russet, rich and juicy, productive.

GORHAM—Resembles Bartlett in size, color and shape. Keeps month longer, ripens 2 weeks later.

***WINTER NELLIS**—Medium size, yellow covered with russet, very fine.

WINTER BARTLETT—Large, resembles Bartlett.

TREE PROTECTORS

We recommend the use of Tree Protectors for young trees. Filbert and Walnut trees in particular should be protected from the sun rays the first year or two, to prevent sunburn. Protectors are your best insurance against this, the most prevalent of all serious injuries to young trees.

Protection Against Sunburn, Rabbits, Squirrels, Scraped Bark.

Prices:	Per 1000	Per 100
15 inch	\$17.50	\$2.50
18 inch	20.00	2.75
24 inch	25.00	3.25

(FREIGHT PAID)

APPLES



FREIGHT PAID PRICES ON APPLES & CRABS

	1 to 10	11 to 25	26 to 50
2 to 3 ft.....	45c	35c	
3 to 4 ft.....	65c	55c	45c
4 to 6 ft.....	75c	65c	55c

(2 to 3 ft. trees sold in multiple of 10 only.)

Orchardists—Please write for special quantity prices.

The following profitable new varieties of merit should be planted by commercial planters desiring the best: Bright Red Rome, Solid Red Delicious, Yellow Delicious, Red Gravenstein, Red Spy, and Yellow Transparent. These are money makers. Order today.

Proven Old Favorites and New

Our stock includes the best of the proven old favorites as well as the dependable newer varieties, covering a range of seasons and uses to meet all requirements.

Apples in this catalog are classified according to their seasons of maturity or use, such as "Summer", "Fall" and "Winter".

Summer Varieties

GRAVENSTEIN—Large, deep red and orange, best flavored.

RED GRAVENSTEIN—Bright red, juicy flesh, excellent flavor, good shipper and desirable as a Commercial sort.

RED JUNE—Medium, red, ripens early.

YELLOW TRANSPARENT—Medium, pale yellow, the best early apple.

GOLDEN SWEET—Large yellow, early sweet apple, good bearer.

Fall Varieties

LATE GRAVENSTEIN—Matures its fruit later than Gravenstein, and keeps longer.

GRIMES GOLDEN—Rich golden yellow, excellent eating and cooking.

KING—Large, striped red, good cooking, productive.

RHODE ISLAND GREENING—Large, yellow green, good eating and cooking.

WEALTHY—Medium, red, early bearing and hardy.

YELLOW BELLFLOWER—Large, pale yellow, oblong.

Winter Varieties

BALDWIN—Large round, deep bright red, juicy and crisp.

BRIGHT RED ROME—A magnificent "double red" Rome Beauty; very early bearer, excellent shipper; a sure cropper.

CORTLAND—New; from N. Y. Station; beautiful large red apple, late keeper and wonderful shipper.

DELICIOUS—Brilliant red, wonderfully flavored, large and juicy.

NORTHERN SPY—Large, striped red, excellent eating apple.

RED DELICIOUS—Large brilliant red, flavored, sweet, lightly touched with acid. Flesh fine grained, crisp and juicy. Preferred for eating. Good keeping qualities.

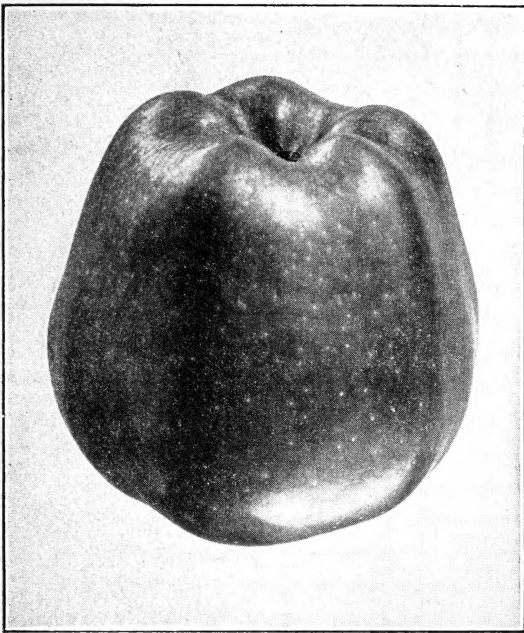
WE PAY

ALL SHIPPING CHARGES

Make this additional saving by ordering
CARLTON Nursery Stock.

Orchardists — Commercial Planters

This catalogue quotes prices on 50 trees and less only. Please write for **SPECIAL COMMERCIAL PRICES ON FIFTY (50) OR MORE TREES.**



Red Delicious

APPLES (Continued)

RED SPY—New, from N. Y. Exp. Station; typical Spy except in color; solid bright red; very hardy and productive.

ROME BEAUTY—Large, yellow, shaded red, ships well.

SPITZENBERG—Large, striped red, rich and juicy.

STAYMAN WINESAP—Yellow, striped red, firm, rich.

TALMAN SWEET—Medium, tinged red, firm and sweet.

WAGENER—Early bearer, fine grained, keeps well.

WINESAP—Medium, yellow streaked with red.

WINTER BANANA—Large, pale yellow, good for desserts.

YELLOW NEWTON—Wonderful keeper, firm and juicy.

JONATHAN—Medium, light yellow, covered with red stripes.

YELLOW DELICIOUS—A wonderful apple; an early bearer of beautiful yellow apples; good shipper.

Orchardists — Commercial Planters

This catalogue quotes prices on 50 trees and less only. Please write for SPECIAL COMMERCIAL PRICES ON FIFTY (50) OR MORE TREES.

CRAB APPLES

(Prices Same as Apples)

HYSLOP—September to October. Fruit medium; yellow with shadings crimson maroon; flesh fine, firm, yellow, astringent; bears abundantly. Ornamental. One of the most desirable sorts for culinary purposes.

RED SIBERIAN—An inch in diameter; clusters; bears young and abundantly. August to September.

TRANSCENDENT—September. Fruit medium to large; color brownish-yellow with blush of carmine; flesh firm and crisp, yellowish, fine grained, very juicy, acid.

WHITNEY — August. Fruit large; yellow, striped with red and covered with red on sunny side; flesh yellow, very juicy and fine grained; flavor rich and almost sweet.

DOLGA—Hardy fiery red crab, desirable for culinary uses; bears young and abundantly.

QUINCES

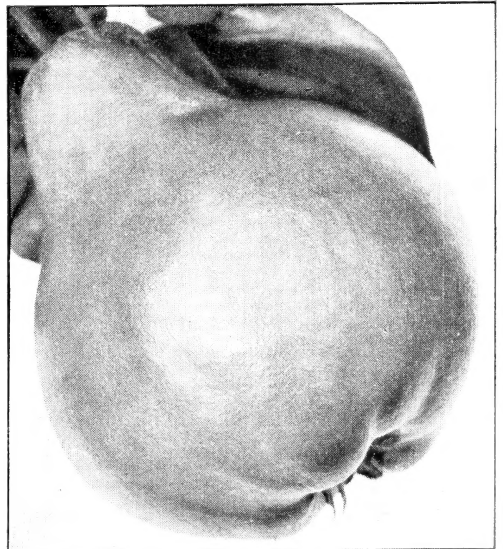
FREIGHT PAID PRICES ON QUINCE

	1 to 10	11 to 25
3 to 4 ft.....	65c	55c
4 to 6 ft.....	75c	65c

ORANGE—Large golden; excellent flavor.

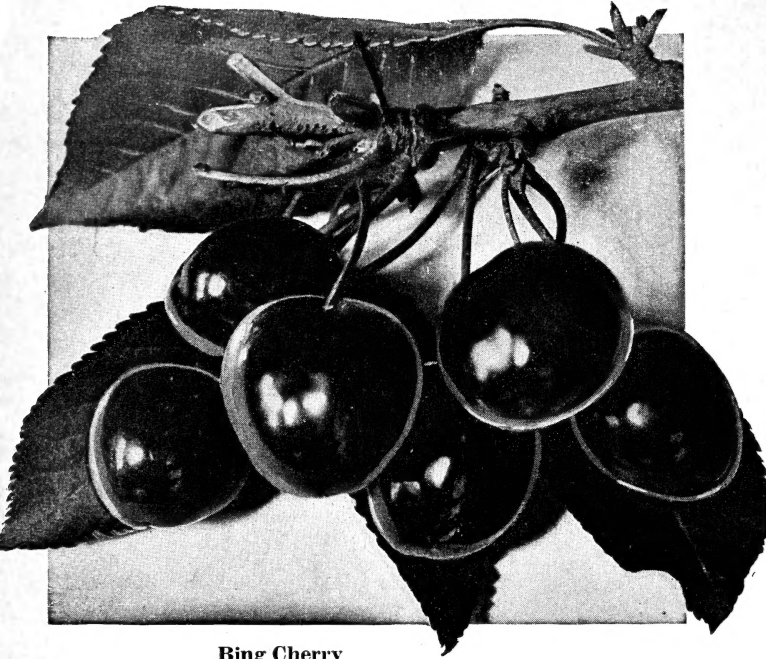
CHAMPION—Very large, bright yellow.

PINEAPPLE—Flavor is suggestive of pineapple; fruit resembles Orange quince; making superior jelly; can be eaten raw, has a most delicious flavor, not equaled by any other quince.



Quince

CHERRIES



Bing Cherry

Sweet Cherries

FREIGHT PAID PRICES ON CHERRIES On Mazzard Root

	1 to 10	11 to 25	26 to 50
2 to 3 ft.....	45c	35c
3 to 4 ft.....	65c	55c	45c
4 to 6 ft.....	75c	65c	55c

(2 to 3 ft. trees sold in multiple of 10 only.)

Orchardists—Please write for special quantity prices.

In planting a Cherry orchard care should be taken not to plant trees too close together; select a dry soil for the Cherry, as a rule, although it is so hardy a tree that it will thrive in a great variety of soil. Use same care in planting as other trees.

Orchardists are resorting more and more to the planting of varieties of Cherries that are strong pollenizers. Experience seems to demonstrate that such varieties as Black Tartarian and Black Republican are the best varieties to use for this purpose. Usually about one in every nine trees has proven to be the right proportion to use of these pollenizers.

Special Note to Commercial Planters: Our cherry trees are grown from heaviest consistent producing orchards. Pollenizers offered are taken from same Proven Blocks of Royal Ann, Bing, and Lambert.

Commercial Sorts: Bing, Lambert, and Royal Ann.

Pollenizers: Black Republican, Deacon, and Black Tartarian.

Special Note to Commercial Orchardists — Many beautiful cherry orchards at 6 to 8 years old, quickly commence to die back and carry a lot of unhealthy wood structure, finally dying out completely. Avoid this terrible loss of time and money by buying your commercial cherry orchard from reliable nurseryman. We offer the very finest of stock grown from certified bud selected sorts direct from the very finest cherry orchards in the west. We grow our cherry trees on whole roots of **true mazzard stock**. Many inferior cherry trees are offered annually by unreliable nurserymen. Buy only the best. Ours will stand the test of time.

BING—Almost as large again as the Black Republican; flesh very solid, flavor of the highest quality; tree thrifty, upright grower, very hardy and productive; a fine shipping and market variety. First of July.

BLACK REPUBLICAN—Fruit dark color; rich, solid and an excellent keeper. Middle of July. Pollenizer.

BLACK TARTARIAN — Very large, purplish black, half tender; flavor mild and pleasant. Tree vigorous, immense bearer. Ripe last of June. Pollenizer.

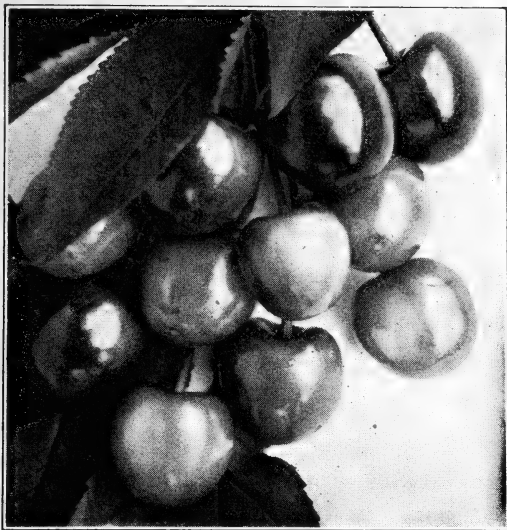
DEACON—Similar to Black Tartarian in color and size, but superior in texture and shipping qualities. One of the most satisfactory for pollenizing.

LAMBERT—Size very large; form roundish, heart-shaped; color dark purplish red, meaty and of fine texture; semi-cling, small seed; flavor sweet or very mild sub-acid, aromatic, rich. Quality very good and an excellent shipper.

ROYAL ANN (Napoleon)—Fruit large; light yellow with red cheek, very rich, solid, excellent keeper. The leading commercial canning cherry.

**WE PAY
ALL SHIPPING CHARGES**

Make this additional saving by ordering
CARLTON Nursery Stock.



Sour Cherries

FREIGHT PAID PRICES ON SOUR CHERRIES

On Mazzard Root

	1 to 10	11 to 25	26 to 50
2 to 3 ft.....	45c	35c
3 to 4 ft.....	65c	55c	45c
4 to 6 ft.....	75c	65c	55c

(2 to 3 ft. trees sold in multiple of 10 only.)

Orchardists—Please write for special quantity prices.

Sour Cannery Variety: Montmorency Large. Our Montmorency Large buds are taken from the best proven block on the Coast and are highly recommended by one of the leading canneries. Plant this type of Montmorency Large for heavy yields and large profits.

EARLY RICHMOND (Kentish)—Medium size, bright red; flesh melting, juicy and rich acid flavor. Last of June.

ENGLISH MORELLO — Medium to large; blackish red, rich, acid, juicy and good.

LATE DUKE — Fruit large, roundish, rich, dark red, sub-acid. Ripens last of July.

MAY DUKE—One of the best hardy cherries; medium size, dark red, melting, rich and juicy. First of June.

MONTMORENCY—Large. Tree very hardy and immense bearer, fruiting young; regular bearer of fine crops; fruit large, fine flavor, shining red, valuable everywhere.

MAZZARD CHERRY SEEDLINGS

	10	100
3 to 4 ft.....	25c	20c
4 to 6 ft.....	30c	25c

APRICOTS

FREIGHT PAID PRICES ON APRICOTS

	1 to 10	11 to 25	26 to 50
2 to 3 ft.....	45c	35c
3 to 4 ft.....	65c	55c	45c
4 to 6 ft.....	75c	65c	55c

(2 to 3 ft. trees sold in multiple of 10 only.)

Orchardists—Please write for special quantity prices.

Large Early Shippers: Peach Apricot, Lewis, Wenatchee Moorpark, Riverland, and Mormon.

Commercial Shippers: Tilton, Blenheim, Royal, and Moorpark.

Exceptional Hardy Sort: Chinese or Mormon Apricot.

BLENHEIM—The fruit is above medium size, oval shaped, deep orange color. Flesh beautiful yellow, juicy, fine flavored.

MOORPARK—Fruit large, roundish. Skin large to deep orange or brownish red in the sun. Flesh quite firm, bright orange, parting from the stone.

PEACH APRICOT—An extremely early, very large, handsome color, firm, rich and highly flavored. Shipping sort.

ROYAL—A fine French variety; fruit roundish, oval, slightly compressed. Skin dull yellow, orange cheek, tinged with red. Flesh pale orange, firm and juicy, rich, vinous flavor.

TILTON—Fruit large size, rich apricot color, flavor of the highest quality. Bears immense crops, either for canning or drying.

LEWIS—A very fine early commercial shipper, large and golden color.

WENATCHEE—A commercial sort, exceptionally large, excellent flavor, very prolific and very early.

MORMON (or Chinese Apricot)—Hardest of all apricots. Excellent flavor, good color. Best for colder sections by far.

RIVERLAND — Early apricot. A new, high quality shipping apricot, with a ten year commercial production record. Trees are grown and sold exclusively by ourselves.



Tilton Apricot

PEACHES

PLANT PEACHES FOR QUICKER PROFITS

FREIGHT PAID PRICES ON PEACHES

	1 to 10	11 to 25	26 to 50
2 to 3 ft.....	45c	35c
3 to 4 ft.....	65c	55c	45c
4 to 6 ft.....	75c	65c	55c

(2 to 3 ft. trees sold in multiple of 10 only.)

Orchardists—Please write for special quantity prices.

All peaches listed are Freestones unless the word cling follows the name.

Best commercial peach sorts for the North-west and Pacific Coast. All Freestones.

Improved Early Elberta, J. H. Hale, Rio Oso Gem, Rochester, Elberta, Golden Jubilee, and Hale Haven.

"These are money makers."

COMMERCIAL SORTS IN RIPENING ORDER

VICTOR—Earliest and most profitable of all early peaches. Largest, smoothest, red skinned, white meated peach of excellent quality. Ships well.

MAYFLOWER—One of the earliest peaches. Medium sized, creamy white fruits, mottled with dark red; firm, white, juicy flesh.

ALEXANDER—One of the finest of the early peaches; greenish-white skin, shaded red; greenish-white flesh, very sweet and juicy.

BABCOCK—The fruit is almost round, somewhat above medium size, and the color ranges from a beautiful pink to deep crimson. The skin is exceptionally smooth; flesh white. We highly recommend the Babcock for regions having mild winters.

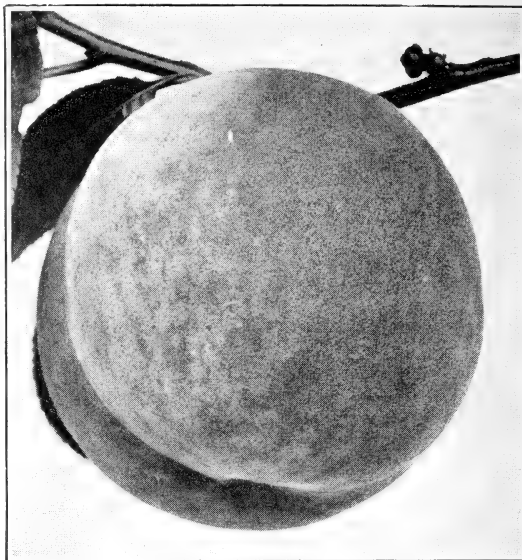
HALES EARLY—One of the very best early white peaches. Skin greenish, splashed with red. Flesh white, juicy and sweet.

ALTON—Early white semi-Freestone; almost a Freestone when ripe; one of hardiest surest bearers known; very large, white meated and most delicious fruit.

TRIUMPH—An extra early yellow fleshed peach. Skin very tender; juicy and sweet. Freestone.

ORIOLE—New, early, yellow meated freestone peach for commercial shipping. Introduced by U. S. D. A.

GOLDEN JUBILEE—The wonderful new yellow freestone ripening a week to 10 days ahead of Rochester, making it a highly profitable sort of



Hale Haven Peach

excellent quality. Is firm, rich in sugar and delightfully fragrant.

ROCHESTER—Has the habits and characteristics of the Crawford, but fully two weeks earlier. Yellow, freestone, good size, very sweet and fine flavor. Requires only half the usual amount of sugar for canning.

IMPROVED ROCHESTER—Yellow freestone, an especially fine type of the Rochester.

SLAPPY—Fruit yellow, good keeper; excellent flavor, fine grained, rich. Hardy early yellow Peach. Excellent quality.

CHAMPION—Best of white freestone varieties. Skin creamy-white with red flush. Extremely hardy and of uniform good quality.

CRAWFORD'S EARLY—Has all characteristics that gratify taste. Color, rich red splashed and mottled with darker red and golden yellow. Flesh is beautiful and perfectly free from stone. Matures in mid-season. Vigorous and productive.

SOUTH HAVEN—A large, yellow freestone, ripening three days ahead of Hale Haven.

HALE HAVEN—A wonderful new, extremely hardy shipping peach of recent introduction. Ripening at the right time, between Rochester and Improved Elberta. An immense golden yellow peach with a red cheek and a strong protective skin. This fine grained, firm, rich, golden fleshed freestone, bears very heavy crops at an early age. Very profitable. An improved South Haven.

**WE PAY
ALL SHIPPING CHARGES**

Make this additional saving by ordering
CARLTON Nursery Stock.

PLANT DEPENDABLE PEACH TREES

WE OFFER NO UNTRIED VARIETIES, EACH HAS A RECORD OF PROVEN PRODUCTION

PEACHES (Continued)

IMPROVED EARLY ELBERTA—This peach is the "Queen" of all canning peaches, and no doubt the biggest selling peach on the market. Fruit is a beautiful golden yellow, blending into a glorious deep pink on the sunny side; a strong protecting skin; exceptionally heavy bearer and a wonderful pollinizer for the J. H. Hale. Ripens about two weeks earlier than Elberta. A truly super-quality canning peach.

IMP. EARLY MUIR—Flesh clear yellow to pit, tender, sweet and mild. Excellent for canning. Ripens just before J. H. Hale.

J. H. HALE—Peach growers have demonstrated during the past several years that this is a profitable variety. Fruit is of largest size, highly colored; flesh is yellow, exceedingly firm and yet tender when eaten; flavor is unexcelled. Fruit ships exceedingly well; remains on the tree in a firm condition for a longer time than any other freestone. **The True Type J. H. Hale.**

ELBERTA — Large yellow, with red cheek; flesh yellow, firm, juicy, of high quality. Exceedingly prolific. Leading market variety.

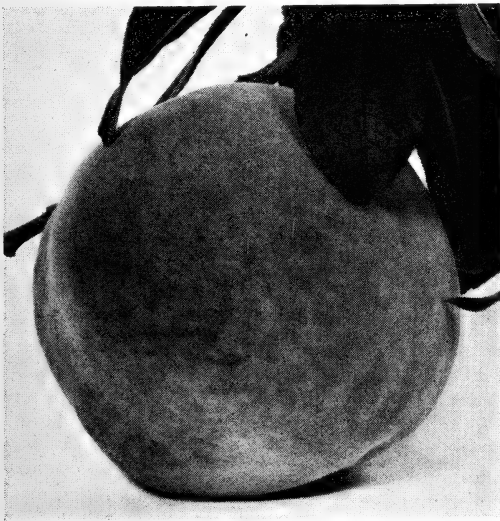
Rio Oso Gem Peach

(U. S. Plant Patent No. 84)

Add 10c per Tree

A splendid new peach that ripens during the period when there is no other peach on the market.

Rio Oso Gem ripens ten days to two weeks after J. H. Hale. Has extreme large size of J. H. Hale, is more highly colored, finer grained in texture, firmer and of better quality than J. H. Hale.



Rio Oso Gem

U. S. Plant Patent No. 84

GOLD MEDAL — Large, round, firm yellow meated freestone, excellent flavor. Good canning variety.

MUIR LATE—Drying. Fruit large to very large. Skin yellow, easily peeled. Flesh clear yellow to pit, tender, sweet and mild. A good bearer; resistant to Curl leaf.

INDIAN BLOOD—Home use. Deep red flesh. Popular for pickling and other culinary uses.

TUSCAN — Cling, commercial canning, shipping, and home orchard. Fruit of good size and attractive. Flesh yellow, with some red at pit. Flavor good.

LATE CRAWFORD — Shipping, drying, and home orchard. One of our oldest varieties, and still popular as a home orchard sort. A large yellow freestone of excellent quality.

PHILLIPS CLING—Commercial canning. Formerly the leading clingstone. Fruit of good size, with prominent beak; yellow. Flesh firm, clear yellow to pit; can be picked over long period. Tree very productive.

ORANGE CLING—Home canning and shipping. Fruit very large; attractive. Flesh yellow and of good quality. Very productive.

SALWAY—Shipping, drying and home orchard. Fruit large. Skin greenish yellow with blush. Flesh yellow, of fairly good quality.

KRUMMEL—October. One of the latest freestone peaches and a profitable market variety. Fruit large, lemon yellow, lightly blushed with carmine; flesh yellow, red at the pit; of excellent quality.

NECTARINES

Prices same as Peaches

In growth, habit, treatment and soils precisely similar to the peach. Valuable for dessert; smooth skin.

BOSTON—Medium; deep yellow, with a bright blush and deep mottlings of red; flesh yellow without any red at the stone; sweet, though not rich, with a pleasant and peculiar flavor. Freestone.

NEW WHITE — Large, white with blush; good quality.

QUETTA—(New, introduced by U. S. Department of Agriculture). Yellow meated and highly colored. Very hardy.

STANWICK—For many years has been a leading Nectarine. Extremely large fruit, the skin pale green, shaded purplish red; the flesh white and juicy, with a most delicious aromatic flavor.

PLUMS

FREIGHT PAID PRICES ON PLUMS

	1 to 10	11 to 25	26 to 50
3 to 4 ft.....	55c	45c	35c
4 to 6 ft.....	65c	55c	45c
6 to 8 ft.....	75c	65c	55c

Orchardists—Please write for special quantity prices.

Best Cannery Sorts: Reine Claude, Green Gage, Imperial Gage, Yellow Egg, Blue Damson.

APEX—Early June. Shipping and market. One of the earliest plums. Medium size; light crimson; good flavor.

***BEAUTY**—Early June. Shipping and home orchard. The earliest Japanese plum, important commercial variety. Fruit medium size, heart shaped, and crimson. The flavor is good. Tree productive; self-fertile.

BAVAYS' REINE CLAUDE—Commercial and home canning. Fruit medium in size, roundish-ovate; light greenish yellow. Sweet and of good quality. Popular for the home orchard.

BURBANK—Late June. Shipping and home orchard. Fruit of good size, almost round, yellow mottled with red. Flesh sweet and of good flavor. Ripens after Climax, and just before Santa Rosa. Tree bears early; must be cross pollinated.

CLIMAX—Middle June. Shipping and home orchard. Fruit large, heart shaped, cherry red; very attractive. Flesh juicy, sprightly, and de-

licious. Tree bears heavily at an early age; self-fertile.

DAMSON — August-September. Local market and home orchard. A tart plum very popular for culinary uses. Fruit small, roundish, dark purple with heavy bloom. Very productive.

***DUARTE**—Late July. Shipping. A blood-red plum of late introduction. Fruit large and elongated; skin a dull red. Flesh firm, deep red, and good quality. (On peach root only).

HUNGARIAN (Pond)—August. Shipping. Large dark purplish red; slightly necked; very attractive. Quality fair.

IMPERIAL GAGE—Large, greenish, juicy and rich. Very productive. August.

GREEN GAGE — A medium small greenish yellow plum of high quality. Midseason.

PEACH PLUM — Fruit large and earliest to ripen; regular, roundish; skin red, dotted with a blue bloom; flesh greenish yellow; tinged with red at maturity; a rich brisk flavor; the leading market variety. Middle of July.

***PRESIDENT**—Large egg-shaped fruits with a beautiful purple skin; flesh yellow and of fine texture; commercial shipping plum. September.

***SANTA ROSA**—Large; purplish crimson; flesh yellow, mottled crimson; very good quality. Excellent for all purposes. Early July.

***SATSUMA**—A very large and well flavored plum with blood red flesh; skin bluish red; very small pit; vigorous and productive. A well known variety much in demand for home canning. July.

VACAVILLE—Pollenizer for President. Large blue plum.

WICKSON — Large; yellow, shaded crimson; flesh amber colored, juicy and sweet. Early August.

YELLOW EGG—Very large; egg shaped, deep golden, excellent for cooking. Late August.

*Varieties best suited for Commercial Shipping.



Plum

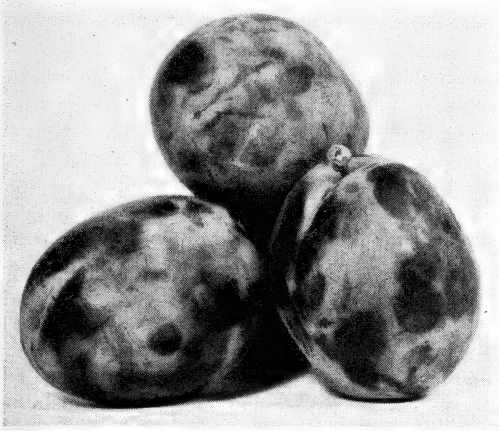
DEPENDABLE QUALITY
for
"Over Half a Century"

PRUNES

FREIGHT PAID PRICES ON PRUNES

	1 to 10	11 to 25	26 to 50
3 to 4 ft.....	55c	45c	35c
4 to 6 ft.....	65c	55c	45c
6 to 8 ft.....	75c	65c	55c

Orchardists—Please write for special quantity prices.



Prunes

Standard Commercial Drying Sorts: Italian, Coats 1418, Date, Improved French, Burton.

The Budwood for our prune trees is selected from the finest and best strains on the Pacific Slope.

COATES 1418; DATE PRUNE—Sweeter, larger than French; fine for drying. Reddish purple, juicy.

HUNGARIAN—Largest size, beautiful bright red, one of the best for marketing; not good for drying. September.

ITALIAN (Fellenberg)—Medium to large size, oval, dark purple; flesh juicy, sweet and delicious; a standard drying and shipping variety. September.

FRENCH IMPROVED — August - September. Drying; leading prune in California, and unexcelled in quality. Fruit medium size, slightly necked; dark blue; skin tender; flesh of fine texture, rich and sugary. Tree vigorous and very productive.

BURTON—A new prune which is one of the largest and finest drying prunes. Rich violet-purple in color, with golden yellow flesh and small pit. A consistent and regular bearer. September.

Orchardists — Commercial Planters

This catalogue quotes prices on 50 trees and less only. Please write for SPECIAL COMMERCIAL PRICES ON FIFTY (50) OR MORE TREES.

SUGAR—Early August. Drying and fresh shipping. The earliest prune. Fruit medium to large, oval, dark purple. Flesh sweet, and of medium quality. A good pollinizer.

SPECIAL PROVEN MONEY MAKERS

For Commercial Shippers of Prunes

EARLY ITALIAN—2 weeks ahead of Italian. This is a proven profitable sort. Fruit identical in shape and color to common Italian, but slightly larger size. Transcontinental shipper.

A "HOME ORCHARD" ON ONE TREE Combination Fruit Trees

Home Owners and Tree Lovers will find a never ending source of interest in growing these "Combination" Fruit trees. A single tree with three or four varieties of fruit ripening over a long season, and producing fruit for every purpose. The "Combination" tree is very ornamental with its display of contrasting colors, shapes and sizes of fruit, and makes an Ideal Shade tree for the small yard.

FREIGHT PAID PRICES

Heavy Branched Trees.....Each \$2.50

APPLE—Four varieties, including the best of the early, summer, fall and winter sorts; the pick of choice red and yellow apples.

PEAR—Three varieties. The supreme quality canning Bartlett; a rich and juicy fall pear, and one that will keep well through the winter months.

SWEET CHERRY—Three varieties. A pink canning and Maraschino sort, a supreme quality black cherry, and a pollinizer to insure heavy production.

SOUR CHERRY—The three most choice sour cherry varieties, which extend the ripening season over a long period.

PLUM—Four varieties. Early, midseason and late sorts especially selected for fresh eating, canning and keeping qualities.

All Combination Trees Are Select Heavy Branched Trees.

Shade for You! Fruit for the Table

It is a wise home owner who plants trees for these threefold benefits; sweet scented blossoms in spring, cooling shade in summer, delicious fruit in autumn. Every home landscape should have its quota of fruit trees. They are inexpensive, yet valuable assets.

NUT TREES



CARLTON FILBERT TREES ARE FULL OF LIFE AND ENERGY

**MAKE YOUR PRESENT LAND WORTH \$1000 TO \$2000 PER ACRE.
FILBERTS AND WALNUTS READILY PAY 12 to 15% ON \$1500 LAND.**

Filberts and Walnuts are very profitable nut crops of the Pacific Coast. Plant a nut orchard and reap golden profits in a very few short years. Our nut trees are grown from record bearing strains budded to the type of root system best suited to your area. Nuts are a heavy bearing, non-perishable crop.

FILBERT

Two-Year Nursery Grown Transplants

	1 to 10	11 to 25	26 to 50
2 to 3 ft.....	55c	45c	40c
3 to 4 ft.....	65c	55c	50c
4 to 6 ft.....	75c	65c	60c

Tip-Layer Trees

	1 to 10	11 to 25	26 to 50
2 to 3 ft.....	50c	40c	35c
3 to 4 ft.....	60c	50c	45c
4 to 6 ft.....	70c	60c	55c

Commercial planters and orchardists—Please write for special prices on quantity orders.

BARCELONA—Most widely planted commercial variety.. A large, round nut, fully self husking, rich in flavor, kernel uniform in size, clean of pellicle and very prolific when pollinized with about 15 per cent DuChilly and Daviana, alternated by setting every third tree in every third row to a pollinizer. Tree a strong, upright grower.

DU CHILLY—Pollinizer. A large, long nut, about 50 per cent self husking and balance readily

husked by machinery or by hand, finest of quality demanding a premium over Barcelona, often used as a main commercial crop.

DAVIANA—Pollinizer. A long, striped nut of the DuChilly type, excellent pollinizer for Barcelona and DuChilly; not planted commercially, quality good and tree a very strong, upright grower.

GRAFTED SUCKERLESS FILBERT TREES

On Turkish Suckerless Root Stock

	1 to 10	11 to 25	26 to 50
5 to 6 ft.....	\$1.00	\$.90	\$.75
6 to 8 ft.....	1.25	1.10	.90

(Special Prices on Large Orders.)

BRIXNUT—Rapidly gaining favor since being introduced in 1914. An immense, large, round nut, fully self husking, very rich in flavor, extremely clean of pellicle, a very certain producer owing to its late blooming period in February and March, by escaping some very unfavorable weather in January, and should be pollinized with every third tree in every third row planted to Halles Giante.

HALLES GIANTE—Pollinizer. A large, round nut, very similar to Brixnut, can be sold as Brixnut and used as the most certain of pollinizers for the Brixnut. Tree a strong, upright grower. Nut is excellent quality.

BARCELONA—Described above.

DUCHILLY—Described above.

DAVIANA—Described above.

FILBERT PLANTING GUIDE ON PAGES 29, 30 and 31

SEEDLING CHESTNUTS

(Bear heavy crops.)

American Sweet

	1 to 10	11 to 25
3 to 4 ft.....	\$1.00	\$.75
4 to 6 ft.....	1.25	1.00

ALMONDS

	1 to 10	11 to 25
2 to 3 ft.....	55c	45c
3 to 4 ft.....	65c	55c
4 to 6 ft.....	75c	65c

Special prices on commercial orders.

Soft Shelled Varieties: Nonpariel, I. X. L., Ne Plus Ultra, Drakes Seedling, and Texas Prolific.
Plant two sorts for success.

THE OLD EASTERN BUTTERNUT

A beloved forest giant of the East whose rough, hard-shelled nuts have provided pleasure for many foraging parties. They bear well here.

Strong 3-4 ft. trees.....	\$1.25
Strong 4-6 ft. trees.....	1.50

GRAFTED PERSIMMONS

	Each
3 to 4 ft.....	\$1.25
4 to 6 ft.....	1.50

Varieties: Golden Hachiya and Fuyu.

Write for special prices on 50 or more.

FIGS Oregon Grown and Acclimated

	1 to 10	11 to 25
Two year old.....	\$1.50	\$1.25
One year old.....	1.25	1.00

Varieties: Latturala Honey Fig, Brown Turkey.

FIGS California Grown

	1 to 10	11 to 25
3 to 4 ft.....	\$.75	\$.60
4 to 6 ft.....	1.00	.85

Varieties: Kadota, Black Mission and White Adriatic.

PROTECT YOUR TREES

Nut trees, particularly should be protected from the sun rays the first year or two; sunburn may lead to serious injury. Please refer to Page 3 for list of sizes and prices.

WE PAY ALL SHIPPING CHARGES

Make this additional saving by ordering
CARLTON Nursery Stock.



VROOMAN FRANQUETTE GRAFTED WALNUTS

On California Black Root

	1 to 10	11 to 25	26 to 50
3 to 4 ft.....	\$1.25	\$1.00	\$.75
4 to 6 ft.....	1.50	1.25	1.00
6 to 8 ft.....	1.75	1.50	1.25
8 to 10 ft.....	2.00	1.75	1.50

Special prices on commercial orders.

The Vrooman Franquette has proven to be the best yielder, highest quality, and most hardy tree for the Northwest, blooming late enough to insure regular crops of finely filled nuts. This combination cannot be found in many sorts.

Special Note: We offer an exclusive type of grafted Vrooman Franquette tree grown from a record producing strain. Stock is high grafted and root system is highly developed.

THOMAS AND STABLER GRAFTED BLACK WALNUTS

On California Black Root

	1 to 10	11 to 25
3 to 4 ft.....	\$1.50	\$1.35
4 to 6 ft.....	1.75	1.50
6 to 8 ft.....	2.00	1.75

Special prices on commercial orders.

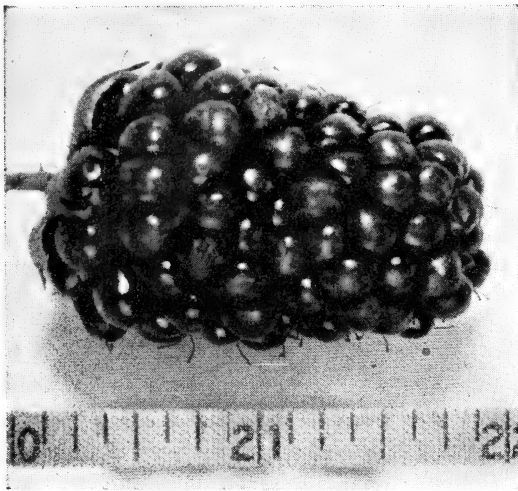
PLANT UNPRODUCTIVE LAND: These Grafted Black Walnuts will thrive where any black walnut will grow. It will pay to plant your unproductive land to these nuts. The timber will be valuable in years to come as well as the big crops of black walnuts that you will harvest.

THOMAS — Very large, splendidly flavored, easy cracking nut. A fast and upright grower. Large meat obtained when cracked. Heavy bearer in five years.

STABLER — Nut medium size, but excellent cracker, excellent flavor. Tree is prolific bearer. Kernel comes out easily, often not divided, so the meats can be extracted in one piece. Bears early.

Orchardists — Commercial Planters

This catalogue quotes prices on 50 trees and less only. Please write for SPECIAL COMMERCIAL PRICES ON FIFTY (50) OR MORE TREES.



Boysenberry

BOYSENBERRY

	Each	10	100
2 Yr.	\$.25	\$2.00	\$15.00

An immense new berry produced by crossing blackberries, raspberries, and loganberries. The flavor is a very pleasing blend of these varieties. It has few and soft seeds. The Boysenberry consistently produces heavy crops, bears young, and the fruiting season lasts two months. The vines are most hardy, drought resistant, and make a strong vigorous growth.

THORNLESS BOYSENBERRY

	Each	10	100
1 Yr.	\$.25	\$2.00	

This thornless strain has retained all the good characteristics of its parent including its rugged, thrifty growth and hardiness. You can handle these canes with your bare hands and enjoy picking the large attractive fruits.

YOUNGBERRY

	Each	10	100
2 Yr.	\$.25	\$2.00	\$15.00

The fruit is very large and very juicy, with a rich blended flavor that is pleasing to nearly everyone. The color so very dark red that it is nearly black and the seeds are few in number and soft. The vines are vigorous.

ACME THORNLESS YOUNGBERRY

(Plant Patent No. 4)

	Each	10	100
1 Yr.	\$.25	\$2.00	\$15.00

The ACME THORNLESS is superior to the parent thorny type only to the extent that the hard punishing and annoying thorns are not present. In other respects there is little difference. Berries ripen a few days earlier.

THORNLESS LOGANBERRY

(Plant Patent No. 82)

	Each	10	
1 Yr.	\$.25	\$2.00	

This new berry has proven far more productive and the berries are larger than the old thorny type of Loganberry. A delightful, highly flavored berry of dark red color. The canes are larger and entirely thornless.

NECTARBERRY

	Each	10	
1 Yr.	\$.25	\$2.00	

Richest flavor of all. Heavier yielding over a long period. Fruits average even larger than Boysenberries.

Genuine Nectarberry plants are not plentiful—yet our prices are very reasonable for a new variety with so many good qualities.

LOGANBERRY

	Each	10	100
2 Yr.	\$.25	\$2.00	\$15.00

The fruit is large, long, an attractive red color, and although it is a little sour it is highly prized by a very great many people for jams and jellies and for mixing with raspberries and other berries in jams and preserves. The vines are trailing and have to be grown on trellis.

BLACKBERRIES

	Each	10	100
2 Yr. No. 1 plants.....	\$.25	\$2.00	\$15.00

MAMMOTH BLACKBERRIES. Quite a popular berry for home use, especially in the hotter, drier sections. The fruit is very large and the seed is very small.

MACATAWA BLACKBERRY. The fruit is uniformly medium size, very sweet and firm, with few seeds and practically no core.

LUCRETIA DEWBERRY. Early, fruit is largest, soft, sweet, no hard core.

CURRENT

	Each	10	100
2 Yr. No. 1.....	\$.25	\$2.00	\$15.00

PERFECTION. Bright red. It is one of the most productive currants. Rich, mild, sub-acid flavor and having plenty of pulp with few seeds.

CHERRY. The largest of all red currants; berries sometimes more than one-half inch in diameter; bunches short; plant very vigorous and productive.

FAY'S PROLIFIC. Large bunches, excellent quality of red berries; very productive.

GOOSEBERRY

	Each	10	100
2 Yr. No. 1.....	\$.25	\$2.00	\$15.00

OREGON CHAMPION. Berries medium, round, smooth, greenish-white with thin transparent skin; good quality and ripens early; bush vigorous and very free from mildew.

Please write for special prices on quantity orders; also one-year planting stock.

RASPBERRIES

**A Good In-Between Crop, Easy to Grow
for Home or Market**

(Finest of Clean, Healthy Plants, Guaranteed)

	10	100
2 Yr. No. 1 Plants.....	\$1.50	\$12.50

RED:

NEWBURGH. New, the finest red raspberry. Its berries are large, heavy yielder, good shipper, and has rugged upright canes. Similar, but decidedly better than Latham.

WASHINGTON. New, produces a very heavy crop of berries that are slightly larger than Cuthbert, firmer and brighter color. Disease resistant.

Taylor. Hardy, large, firm. High quality.

Chief. Early, good quality; hardy.

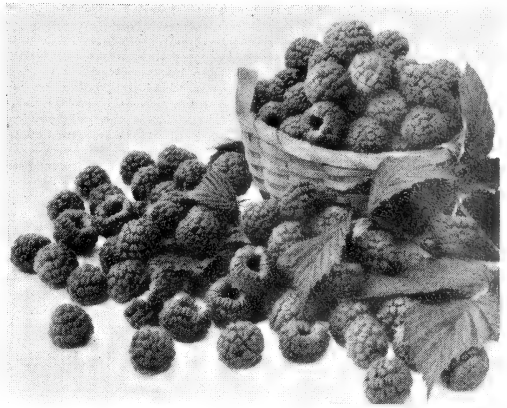
Lloyd George. Everbearing. Good quality.

Latham. Excellent quality; very productive.

St. Regis. Everbearing. Large, sweet.

Imp. Cuthbert. Very hardy; high quality; shipper.

Please write for special prices on quantity orders and one-year p'anting stock.



BLACK:

Munger. Highest quality, Imp. Cumberland.

Cumberland. Early, large, firm, fine quality.

YELLOW:

Golden Queen. Beautiful yellow; very productive.

ASPARAGUS

Prices:	10	25	100
2 Year No. 1.....	\$.60	\$1.00	\$2.50

MARY WASHINGTON. Rust res'tant. The shoots are large, very vigorous, straight and of superb quality. Dark green. A good variety for both the home gardener and commercial grower.

PALMETTO. Early, large size, even and regular in growth and appearance.

RHUBARB

The following varieties are best for the West Coast:

RIVERSIDE GIANT—Extra large, fine for canning.

MAMMOTH VICTORIA—Prolific market sort. Fine flavor.

Prices: Each, 15c; 10, \$1.25; 100, \$10.00.

HORSERADISH ROOTS

Horseradish thrives everywhere.

Prices: Each, 15c; 10 for \$1.25.

STRAWBERRIES

	25	100	250	1000
Prices.....	\$.75	\$1.50	\$3.00	\$10.00

EARLY VARIETIES

Dorsett, Fairfax, Gold Dollar.

MID-SEASON VARIETIES

Improved Oregon, New Washington, Banner, Oregon Plum, Marshall.

LATE VARIETIES

Red Heart, Corvallis, Imp. Magoon.

EVERBEARING STRAWBERRIES

	25	100	250	1000
Prices.....	\$.75	\$2.00	\$4.00	\$15.00

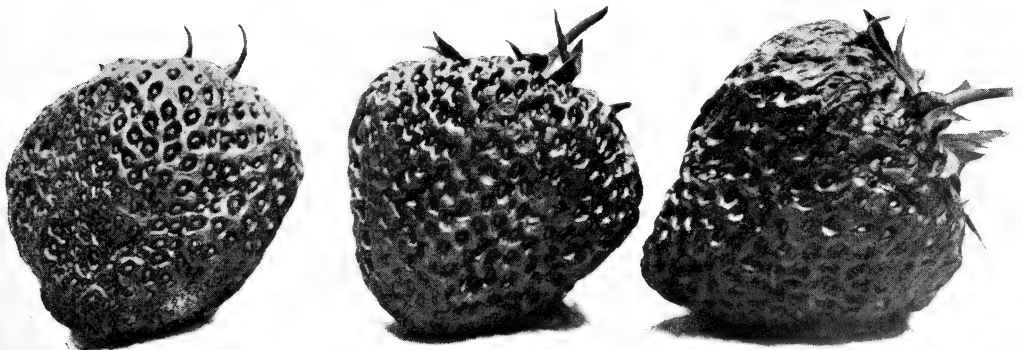
Mastodon, Gem, Progressive.

ROCKHILL No. 26 EVERBEARING

Fruits young, prolific. Do not make runners.

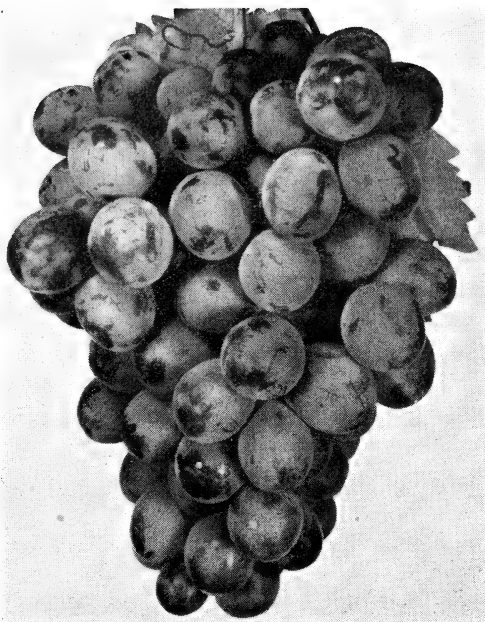
	25	100	250	1000
Prices.....	\$1.50	\$5.00	\$11.00	\$40.00

Please write for special prices on quantity orders.



GRAPES

ALWAYS BEAR



HAVE PLENTY OF GRAPE JELLY, JAM AND JUICE

Several tons of Grapes are harvested to the acre. Planting them 8 feet by 8 feet requires 680 plants to the acre.

HARDY AMERICAN GRAPES

Prices:

	Each	10	100
2 Yr. No. 1.....	30c	25c	20c

Special prices on large orders.

MOORES DIAMOND (White)—Large, early grape.

MOORES EARLY (Black)—Earlier than Concord, hardy.

CAMPBELL'S EARLY (Black)—Large, sweet, juicy, good.

ISLAND BELLE (Black)—Large, early, good west of Cascades.

CONCORD (Black)—General favorite, hardy, productive.

WORDEN (Black)—Early and larger than Concord.

BRIGHTON (Red)—One of leading commercial varieties.

DELAWARE (Red)—Small, compact bunches, very sweet.

NIAGARA (White)—Good, called "White Concord."

AGAWAM (Red)—One of the best reds.

NEW VARIETIES

Prices: 40c each; 10 for \$3.00. Special prices on large orders.

PORTLAND—White. Very early, large berries of excellent quality.

FREDONIA—Black. A juicy, delicious black grape that ripens early.

GOLDEN MUSCAT—A new hardy grape with the desirable qualities of European varieties. Clusters are very large, heavy, long, broad, tapering and compact.

URBANA—Red. Its flavor is unique and equal to the best European varieties. Very sweet, good keeper; excellent for jelly.

BLACK MONUKKA—A seedless black Persian grape. Large, loose bunches borne in great profusion.

CACO—New red grape of exceptional merit. Earlier than Concord. Wine-red, compact bunch, good size, hardy, thrifty grower.

EUROPEAN VARIETIES

Prices: European Sorts

	Each	10	100
Heavy 1 Yr. No. 1.....	25c	20c	15c

Write for special prices on large orders.

TOKAY (Red)—Large, favorite.

RIBIER (Black)—Very large, sweet, excellent for home and market.

MUSCAT (White)—Muscat flavor, a raisin grape.

MALAGA (White)—Very large bunches, good shipper.

RED MALAGA—Large, firm, thick skin, sweet, heavy bearer, shipper.

BLACK HAMBURG (Black)—Large, a great favorite.

ZINFANDEL (Black)—Compact bunches, juicy, borne in enormous quantities.

THOMPSON SEEDLESS (White)—Small, sweet seedless, good drier.

SWEETWATER (White)—Medium size, sweet, rich flavor.

BLUEBERRIES

	Each	10
2 Yr. 10 to 15 inch.....	\$.75	\$.65
3 Yr. 18 to 24 inch.....	1.00	.90

Special prices on large orders.

RANCOCAS—Early, large berries, strong grower, good commercial berry.

RUBEL—Midseason, berries medium size, flavor good, produces enormous crops.

GROVER—Late, attractive bush, berries large, delicious.

UN-NAMED VARIETIES—10c per plant less. (Fruiting over long season, are very desirable.)

FLOWERING SHRUBS

FLOWERING SHRUBS give the finishing touch so much required by small and large home-grounds. When properly arranged, shrubs will soften the lines of the foundation, will provide an effective border or screen, will cover the edges of walls and screen objectionable views. Shrubs may also be used for covering slopes and for dividing the landscape into small sections, and for bordering the outdoor living-room of small homes. A selection of varieties will give a succession of flowers from spring until late autumn and after the foliage has fallen the brilliant berries and branches add color and cheer to the winter landscape.

"WE PAY THE FREIGHT"

ALTHEA (Rose of Sharon)

Bright glossy leaves; flowers similar to a rose. Hardy summer and fall blooming shrub. Double white, double red, and single mixed. 2-3 ft. 75c.

BARBERRY

Japanese Thunbergi—An excellent group plant or for hedging. Foliage turns to a bright crimson before falling. Red berries. Strong plants, 75c.

Thunbergi Atropurpurea—Same as above except the foliage is red at all times. Strong plants, 75c.

BUTTERFLY BUSH (Buddleia)

Magnifica — Rapid growing, semi-evergreen. Flowers on long fragrant spikes are borne profusely from June to November. Strong plants, 75c.

Isle de France—New. Reddish purple. 2-3 ft. 90c each.

Charming—Long sprays lavender-pink blooms. 2-3 ft. 90c each.

Dubonnet—Dark wine, firm large spikes of large flowers. 2-3 ft. 90c each.

Hartwigi—Very dark purple. 2-3 ft. 90c each.

BEAUTY BUSH (Kolkwitzia)

In the spring, the graceful, arching branches of this fine shrub are completely covered with lovely pink flowers. The foliage itself is very attractive. 2-3 ft. 90c each.

CORALBERRY

Symphoricarpus Vulgaris—A slender branched



Hydrangea P. G.

upright shrub for shady places. Fruit is purplish red and hangs on well into winter; flowers small, rose colored. Strong plants, 75c.

CRANBERRY BUSH (Viburnum Opulus)

Tall growing snowball, producing red berries during late summer and fall. 2-3 ft. 75c.

DEUTZIA

Rosea—White flowers tinged with pink on backs of petals, giving the plants a pink effect. 2-3 ft. 75c.

Gracilis—A dwarf compact form with clear white flowers. 2-3 ft. 75c.

Pride of Rochester—Tall growing, white flowers tinged rose on back. 2-3 ft. 75c.

HYDRANGEA

Otaksi—Profuse double blue blossoms. Low and slow growth. Heavy clumps, 90c.

Aborecens (Hills of Snow)—Showy flower heads from June to cold weather. 2-3 ft. 90c.

Paniculata Grandiflora—Large cone shaped flowers of white in August, changing to pink as the flowers ripen. 2-3 ft. 90c.

Tree Hydrangea—Same as above, but grown in tree form. 3-4 ft. \$1.25.



Forsythia, Honeysuckle, Lilac, Snowball, Spirea, Mock Orange



French Budded Lilac

FRENCH BUDDED LILACS

Prices: 18-24 in. 75c; 24-30 in. \$1.00

The Lilac is a well known hardy shrub and hardily needs describing; however, the newer Budded French named varieties have richer colored and more double blossoms of unusual fragrance.

Belle de Nancy—Double. Large beautiful satiny rose.

Chas. Joly—Double dark reddish-purple.

Charles X—Single. Magnificent clusters of dark reddish purple flowers.

Ludwig Spaeth—Single. Very attractive dark red flowers. One of the best dark varieties.

Mad. Lemoine—Double. Snow-white flowers in immense clusters.

Mad. Abel Chatney—Double white.

Wm. Robinson—Double. Violet-pink. Very attractive color.

LILAC

Common—Old fashioned sweet scented flowers. 2-3 ft. 75c.

QUINCE

Japonica—A very fine old plant that should find a place in every garden. Red, Pink, and Variegated. 2-3 ft. 75c.

FORSYTHIA

All varieties are grown for their pretty bright yellow flowers very early in the spring, ahead of their leaves. 2-3 ft. 75c.

Fortunei—Upright heavy arching branches.

Suspensa—Slender trailing branches.

Intermedia Spectabilis—Largest, darkest flowers. Most profuse bloomer.

HONEYSUCKLE

Morrowi (Bush Honeysuckle) — An upright grower with pure white flowers. 2-3 ft. 75c.

Pink Tartarian—Similar to above but with pink flowers. 2-3 ft. 75c.

KERRIA

Japonica—Slender upright stems and branches. Double orange flowers in the early spring and continue intermittently throughout the summer. 2-3 ft. 75c.

PHILADELPHUS

Lemoinei—Rich foliage and large pure white fragrant flowers. 2-3 ft. 75c.

Virginalis—Semi-double flowers blooming very freely in spring and intermittently all summer. 2-3 ft. 75c.

SNOWBALL

Opulus Sterile—The old fashioned snowball that blooms in May. 2-3 ft. 75c.

Tomentosum Plicatum (Oriental Snowball) — Showy clusters of double white flowers. 2-3 ft. 90c.

SPIREA

Anthony Waterer—Crimson flowers blooming profusely all summer if spent flowers are kept cut away. 2-3 ft. 75c.

Thunbergi—A beautiful display of white flowers in the early spring ahead of the leaves. Soft feathery foliage. 2-3 ft. 75c.

Van Houtte—Upright, tall growing with flowers in white clusters. 2-3 ft. 75c.

TAMARIX

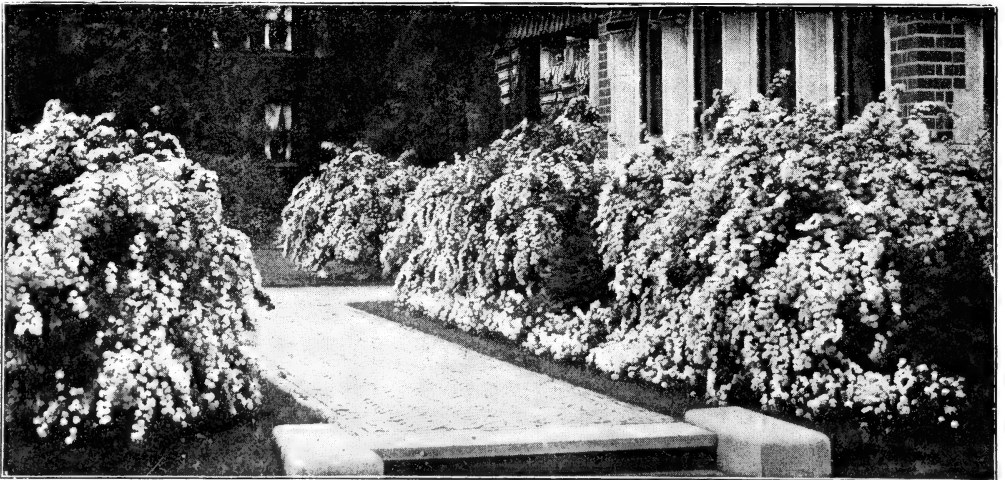
Africana—A beautiful shrub with small feathery foliage. Delicate pink flowers. 2-3 ft. 75c.

Hispidia—Bright pink flowers, June-July. Very hardy.

WEIGELIA

Rosea—Bright pink bell-shaped flowers. 2-3 ft. 75c.

Eva Rathke—Dwarf form with red flowers. Blooms continuously throughout the summer. 2-3 ft. 75c.



Spirea Van Houtteii

CARLTON'S EXQUISITE FLOWERING TREES

ADD CHARM TO YOUR HOME

ROSE-FLOWERING CHERRIES

Among the flowering trees the Rose-Flowering Cherry takes the lead. They vary in form and therefore may be adapted to many uses in landscape work. Some are vase-form, others pyramidal in growth, but most sorts have wide-spreading branches, vigorous in growth, and still other are rather dwarfish. Nearly all are tinted various shades of pink, and a few are white. Trees are hardy. While known and used in the Orient for hundreds of years, these valuable trees are rapidly becoming popular and gaining favor in the United States. Both upright and weeping growth.

The display of Flowering Cherries at Washington, D. C., in early spring is one of the great sights of our national capital and annually attracts thousands of visitors.

Prices: 2-3 ft.	\$.75
3-4 ft. Branched	1.00
4-6 ft. Branched	1.25

Kwanzan. Double, rose-pink. Handsomest of all the double flowering cherries. Blooms just after the middle of April (depending somewhat upon locality. The tree is upright and spreading, and at maturity 25 to 30 feet high. Leaves and flowers appear simultaneously. The buds are red, and the fragrant, rich, rose-colored double blossoms are borne in clusters. Flowers are very large, up to 2 inches in diameter. A graceful and beautiful tree for the lawn or grounds; also adapted for planting in parking strips and along avenues.

Shirofugen—15 ft. Has the very largest flowers of any variety that we grow, deep pink in the bud and pale pink in the open flowers. It is almost impossible to describe the beauty of this tree when in full bloom.



Kofugen—Double deep pink. vigorous, upright and no great tendency to spread, adapting it to street planting. Best deep pink sort.

Mount Fuji—Pure white; remains attractive; calyx turning reddish with age. A bushy, small tree, hardy, extremely floriferous.

WEEPING CHERRY

One of the finest weeping trees for lawns and small grounds. The branches are slender and when grafted on tall stems, fall gracefully to the ground. The flowers are rose-colored, appearing before the leaves.

No. 1 heads, about 6 feet tall, \$2.75.

Single Pink Weeping Cherry.

Double Pink Weeping Cherry.

PURPLE FRINGE, or SMOKE TREE

A small tree or shrub, very much admired on account of its peculiar fringe or hair-like flowers, covering the whole surface of the bush in mid-summer.

Prices: 2-3 feet \$1.00; 3-4 feet \$1.50

PINK FLOWERING DOGWOOD

Pink flowering variety which is greatly in demand. 1½-2 ft. \$1.75 each; 3-3½ ft. \$3.50 each.



Kwanzan Flowering Cherry

WE PAY

ALL SHIPPING CHARGES

Make this additional saving by ordering
CARLTON Nursery Stock.



Bechtel's Double Flowering Crab

FLOWERING CRAB (Malus)

Producing flower effects equal to those of more talked-of cherries. The crabs are hardy and add a charm of fragrant wildness to a planting.

They are extremely hardy and will thrive in positions and exposures which would be fatal to the more delicately constituted cherries. They also exhibit a greater variety in character of tree, a wider range of color in their blossoms, and in autumn are adorned with glittering clusters of fruit in shades of green, yellow, orange, scarlet, and crimson. No other flowering trees equal the flowering crabs in profusion of bloom, and among other good qualities, varieties may be selected which have a restricted growth or dwarf habit so that they will never become too large and clumsy.

Price: 4-6 ft. Branched..... \$1.00

Atrosanguinea—In early May, every twig and branchlet of the Carmine Crab is covered with clusters of dark pink, almost crimson flowers. It is somewhat taller than other crabs and is a handsome lawn specimen. Ultimate height 15 feet or more.

Bechtel's—The flowers are a beautiful shade of pink, are large, very double and fragrant, resembling little roses. It blooms somewhat later than most varieties.

Dolgo—Hardy fiery red crab, desirable for culinary uses; bears young and abundantly. Good for ornamental purposes.

Eleyi — Attractive reddish foliage in spring changing to pink. Clustered single rose-pink flowers followed by showy red fruit.

Floribunda purpurea — In habit it resembles Floribunda. Its purple foliage and bark, single crimson flowers and fruit make it a distinct departure from the ordinary. The flowers and fruit are carried on long, pendulous stems and are produced in great abundance on mature trees. It is a strong grower, and when in bloom, its blossoms completely conceal the twigs and branches.

Hopa—A beautiful, upright growing tree with attractive foliage. Entirely covered with rose-colored flowers in April. Fruit red inside and out, hanging on until late autumn. Very hardy and free from disease. Planted extensively.

Niedzwetzkyana — A very interesting variety with purplish foliage which makes a very pleasing contrast when used with other flowering crabs or any other flowering trees or shrubs. Bears large edible fruit.

Parkmani—An irregular shaped little tree when young, Parkman's Crab assumes a most attractive picturesque habit as it grows older. The flowers are bright rosy red, double, and droop gracefully on threadlike pedicels. It is a gorgeous ornament to any planting, and has long been a favorite of the Japanese.

Scheideckeri—The flowers of Scheidecker's Crab are double, bright pink, last a long time, and the fruit, which is produced in great profusion, is waxy yellow. The tree has a regular pyramidal habit, about 15 feet high. Best and easiest to flower.

Spectabilis (Chinese Flowering Crab) — Growth decidedly erect and vase-like. Flowers double, fairly large and light pink, followed in autumn with beautiful red fruit.

DOUBLE FLOWERING HAWTHORNE

Dense growth, attractive foliage, brilliant coloring in fall, with handsome decorative fruits and flowers.

Prices: 5-6 ft. One Year..... \$.75
6-8 ft. One Year..... 1.00
6-8 ft. Branched 1.50

Paul's Double Flowering — Has wide spreading, irregular, spiny branches, the head about equaling the height in diameter. In May it is very decorative with an abundance of double carmine-red flowers, followed by red fruit.

Double Pink — Small tree. Early spring, pale pink, red fruit.

Carriers—Beautiful glossy foliage; large, bright red berries.

DOUBLE FLOWERING ALMOND

Prices: 2-3 ft. 75c; 3-4 ft. \$1.00

These well known bushy shrubs never fail to produce in early spring, before the leaves appear, a profusion of small, very double, pink or white, rose-like flowers that are closely set along the branches. Choice of pink or white.



Flowering Almond



Flowering Peach

FLOWERING PEACHES

For an easily and quickly obtained mass of spring color, there is nothing to excel the Flowering Peaches. They will grow with the greatest ease anywhere and never fail to produce a great profusion of bloom. Not only are the trees a source of great admiration in the garden, but the trees enjoy having their branches cut for indoor use.

Price: 4-6 ft. Branched..... \$1.00

Early Double Red—Blossoms ten days earlier than the rest. Flowers of good size, double, slightly loose and rather light, clear red. Most popular variety.

Late Red—The same rich ruby-red as the earlier one but blooming three weeks later. Very large blooms.

Burbank — Large double pink flowers, late. Strong growing tree.

Appleblossom—Grows rapidly. The large double blossoms are soft, rich pink in color.

Wrigley's Pink — The first variety to bloom. Flowers are large, double and a rich rosy pink.

Bi-Color (Peppermint Stick)—As beautiful as it is curious. Name comes from the color of most of the flowers which are double white more or less marked with red stripes. The red may vary from a few narrow lines to heavy bars of red, while here and there will appear a solid red flower.

**WE PAY
ALL SHIPPING CHARGES**

Make this additional saving by ordering
CARLTON Nursery Stock.

PURPLE-LEAVED FLOWERING PLUMS

Small growing, distinct ornamental trees used as specimens or grouped with other trees and shrubs in border or background. Their foliage produce beautiful tones of purple, very attractive where colored effects are desired. The varieties differ in pink, white, single and double blossoms.

Prices: 4-6 ft. \$.75
6-8 ft. Branched 1.00

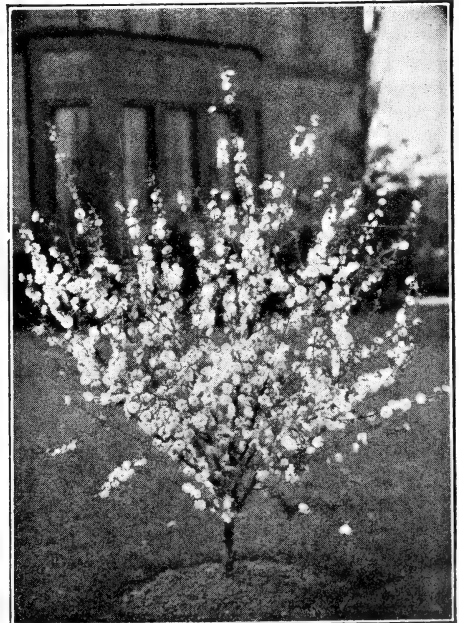
Bliriana—Upright growth with dark purple foliage. The blossoms, appearing early in May, are deep pink, double and fragrant. The shape and size resembling the Flowering Almond blooms. This is one of the best varieties. Twelve to fifteen feet at maturity.

Pissardi—Beautiful purple foliage, retaining its color well through the season. It has attractive pale pink flowers in May. Edible fruit excellent for jelly. Fifteen to twenty feet at maturity.

Vesuvius (Burbank's Purple Leaf Plum)—Foliage larger and more reddish than *Prunus pissardi*. Flowers are slightly larger and later. A very brilliant decorative tree.

Thunder Cloud—This and the *Vesuvius* have the most beautiful foliage of any of the flowering plums. The leaves appear a rich red color and gradually become darker, turning to a very rich purple.

Triloba (Rose Tree of China)—The flowering plum blooms early in May before the leaves come out. The delightful double, quilled, bright pink flowers stud every twig and branchlet so heavily no wood is visible. Very handsome and should not be left out of any garden.

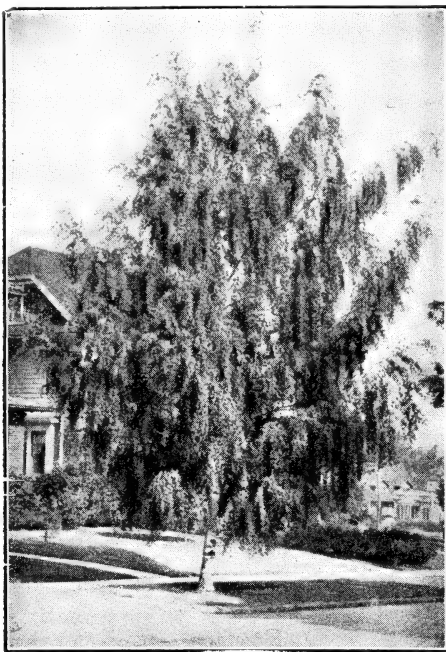


Triloba Flowering Plum

ORNAMENTAL AND SHADE TREES

WE PAY THE FREIGHT

By all means plant shade trees. They are effective ornamentally from the time they are set out and soon their spreading growth will create a sheltered environment for the home that will be a pride and joy with the passing years.



Cutleaf Weeping Birch

BIRCH

Cutleaf Weeping—A very graceful and clean appearing tree with its white bark and slender drooping branches and deeply cleft leaves. 5-6 ft. \$1.00; 6-8 ft. \$1.50.

European—Leaves similar to Poplar. White bark and of pyramidal form. A fine street tree and very hardy. 5-6 ft. \$1.00; 6-8 ft. \$1.50.

BEECH

Copper—Glossy, shiny leaves of copper. One of the most beautiful trees grown. Its growth is very slow but even and regular. Grafted trees, 4-5 ft. \$3.00 each; 5-6 ft. \$3.50 each.

BOXELDER

Silver Variegated—Very showy and will stand out very bright in a planting. Grafted trees, 5-6 ft. \$1.50 each; 4-5 ft. \$1.25 each.

CATALPA

Speciosa (Western Catalpa)—A rapid growing tree with very large leaves, a nice clean bark and large white flower heads followed by long bean-shaped seed pods. 6-8 ft. trees, \$1.50.

Bungii (Umbrella Tree)—Grafted heads that form into a wide umbrella shape. Very desirable for street planting or as specimens in the lawn. 5-6 ft. standards, 2-yr. heads, \$2.50 each.

ELM (Ulmus)

American—Tall wide spreading tree with a grace and beauty all its own. 5-6 ft. \$1.00 each; 6-8 ft. \$1.25.

Chinese (Ulmus Pumila)—A rapid growing tree with a dense head. Extremely hardy, thriving in almost any soil. 5-6 ft. \$1.00 each; 6-8 ft. \$1.25 each.

GOLDENCHAIN (Laburnum Vulgare)

Beautiful small tree with clover-shaped leaves; flowers are fragrant long chains of golden yellow. 5-6 ft. \$1.50 each; 6-8 ft. \$1.75 each.

LINDEN (Basswood)

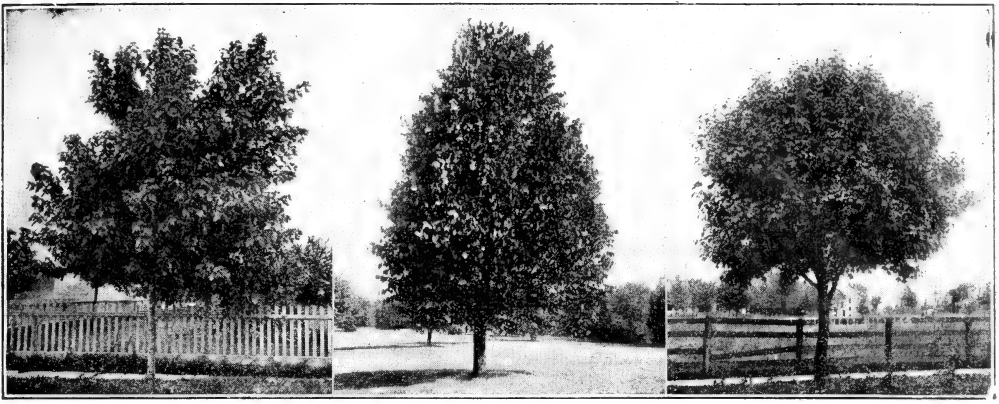
European—Large, full heads. Large leaves similar to Catalpa. A good street tree. 5-6 ft. \$1.25; 6-8 ft. \$1.50.

LOCUST (Robinia)

Honey Locust (Gleditsia Triacanthus)—Of much slower growth than the black locust. Small round leaves similar to pepper trees. Very attractive and desirable as an ornamental tree. 6-8 ft. \$1.50 each.



Chinese Elm



(Silverleaf)

Maple Trees
(Schwedler)

(Norway)

MAPLE (Acer)

Norway (Platanoides) — Large rapid growing tree that will cast a dense shade. 5-6 ft. 75c; 6-8 ft. \$1.00; 6-8 ft. br. \$1.25.

Schwedler—Very similar to the Norway maple except the leaves are purple. 5-6 ft. \$1.25; 6-8 ft. \$1.50.

Dasycarpum (Silver Maple)—Rather slim type with silvery bark and light green leaves. 5-6 ft. 90c each; 6-8 ft. \$1.25 each.

Lace-Leaf Silver Maple—A most beautiful tree, with finely cut silvery foliage. The slender branches give this tree a graceful appearance equal to Cutleaf Weeping Birch. 5-6 ft. \$1.25; 6-8 ft. \$1.50.

MOUNTAIN ASH (Sorbus)

Aucuparia—Narrow erect tree. Beautiful clusters of red berries in August. 5-6 ft. \$1.00; 6-8 ft. \$1.25 each.

OAK (Quercus)

Paulustrus (Pin Oak)—A very sturdy tree of slow dense growth. The leaves turn a brilliant scarlet changing to brown and remain on the tree the greater part of the winter. 5-6 ft. \$1.25.

Red Oak (Rubra)—Simliar to Pin Oak. Leaves are not so deeply cleft. 5-6 ft. \$1.25 each.

POPLAR (Populus)

Carolina (P. carolinensis)—Distinct in habit of growth, having upright pyramidal head. Much planted, vigorous grower. 6-8 ft. 90c; 8-10 ft. \$1.25 each.

Lombardy (P. nigra italica) — Tall, narrow growth. With age becomes one of the most striking and picturesque trees. 6-8 ft. 90c; 8-10 ft. \$1.25 each.

PLANE TREE, Platanus (Sycamore)

Orientalis—An evenly branched tree with rather broad head. A fine stately type. 5-6 ft. \$1.25 each; 6-8 ft. \$1.50 each.

REDBUD

Cercis Canadensis — Similar in effect to Hawthorne but of more regular growth. Clusters of rosy pink flowers cover the plant in May. 5-6 ft. \$1.00; 6-8 ft. \$1.50.

TULIP TREE (Liriodendron)

Tulipifera—Handsome upright tree with bluish green foliage and greenish colored, tulip shaped flowers. 6-8 ft. \$1.50 each.

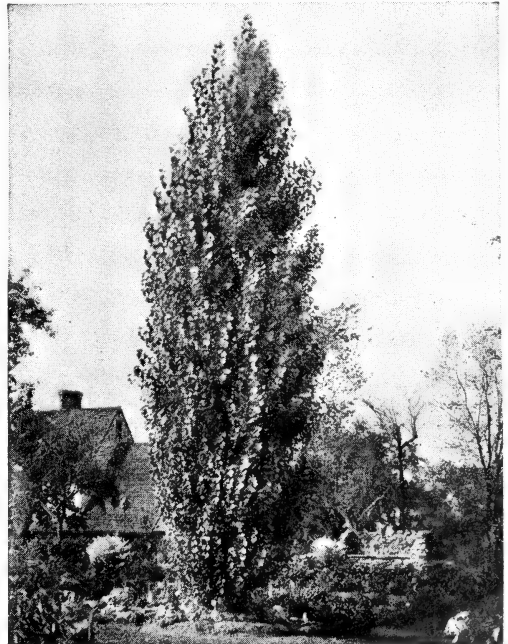
WILLOW (Salix)

Babylonica—The most effective large growing weeping tree of all. 5-6 ft. \$1.00; 6-8 ft. \$1.25 each.

Niobe—Golden bark, graceful weeping habit. 5-6 ft. \$1.00; 6-8 ft. \$1.25 each.

WALNUT

Black—Large headed trees that will afford an abundance of shade. 6-8 ft. \$1.00 each.



Lombardy Poplar



Hardy Climbing Vines and Creeping Plants

Provide comforting shade and colorful beauty. Nothing lends such pleasing effect to wall or veranda as the judicious use of vines.

CLEMATIS

Jackmani — The giant purple Clematis, and favorite everywhere. 2-yr. plants, \$1.00.

Henryi — Large sized lustrous white flowers. 2-yr. plants, \$1.00.

Mad. Ed. Andre — Large velvety red flowers. 2-yr. plants, \$1.00.

Paniculata — Luxuriant grower, with fine foliage, and an abundance of small, white, fragrant flowers. 2-yr. plants, 75c.

HONEYSUCKLE

Hall's Japan — Old-time favorite. White and yellow, fragrant flowers last nearly all summer; foliage almost evergreen. 2-yr. 75c.

Scarlet Trumpet — Handsome clusters of scarlet flowers. Hardy, vigorous climber. 2-yr. 75c.

SILVER LACE VINE

Beautiful, quick growing vine, with rich, glossy green foliage, and a mass of feathery white bloom. 2-yr. plants, 75c.

BITTERSWEET

Favorite, with bright glossy foliage, bearing sprays of bright orange berries in the fall. 2-yr. plants, 75c.

WISTARIA (Grafted)

Purple or White — The most magnificent of all vines. Lasts for generations, becoming more beautiful each year. 2-yr. plants, \$1.00 each.

IVY

Boston — Dainty, lovely vine with small overlapping leaves, forming a dense sheet of deep green, turning in the fall to bright scarlet. Clings tightly to any surface without support. 2-yr. plants, 75c.

English — The best for bank covering. 2-yr. plants, 50c.

VIRGINIA CREEPER

Dense, green foliage turns bronzy red in autumn. Clings to walls or any support. 2-yr. plants, 75c.

LEARN THE JOY OF PLANTING THINGS

HEDGE PLANTS

Can you imagine anything more beautiful and fascinating than a living fence?

BARBERRY

Thunbergi — An excellent barrier to 30-36 inches. Leaves turn a brilliant red in the fall. 15 to 18 in. 10 to 25 plants @ 35c each; 26 to 100 plants @ 30c each.

Thunbergi Atropurpurea — Same as above except the leaves are red all summer. 10 to 25 plants @ 45c each; 26 to 100 plants @ 40c each.

BOXWOOD

Suffruticosa (True Dwarf) — Just the thing for formal gardens. No. 1 hedge grade. 10 to 25 plants @ 30c each; 25 to 100 @ 25c each.

LAUREL

English — Best for large hedge. 12-15 in. plants: 10 to 25 @ 35c each; 26 to 100 @ 30c each. 9-12 in. plants: 10 to 25 @ 25c each; 26 to 100 @ 20c each.

PRIVET

California — A rapid grower and makes a full compact hedge. Same price as English.

Lowdense — A new dwarf variety for hedges of about 24 inches. 9-12 in. plants: 10 to 25 plants @ 25c each; 26 to 100 @ 20c each.

English — One of the best. 18-24 in.: 10 to 25 plants @ 20c each; 26 to 100 plants @ 15c each.

ROSES, Queen of Flowers

Here is the biggest bargain in America on Quality Rose Bushes. Guaranteed to bloom this year, and under favorable growing conditions, within a few weeks.

THE NEWER AND BETTER ROSES

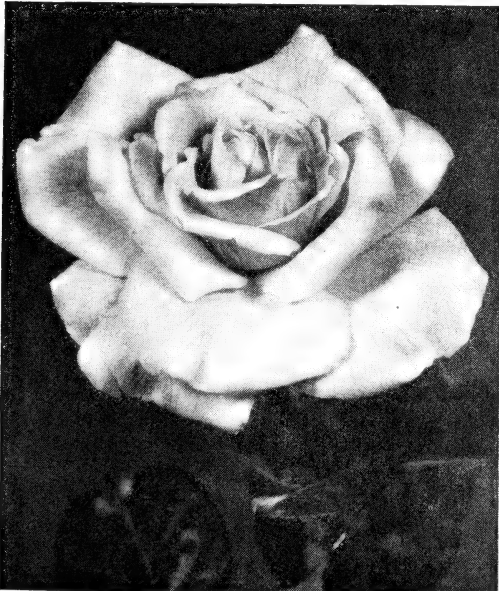
POSTPAID PRICES:

	Each	Dozen
2 yr. No. 1—Field grown.....	50c	\$5.00

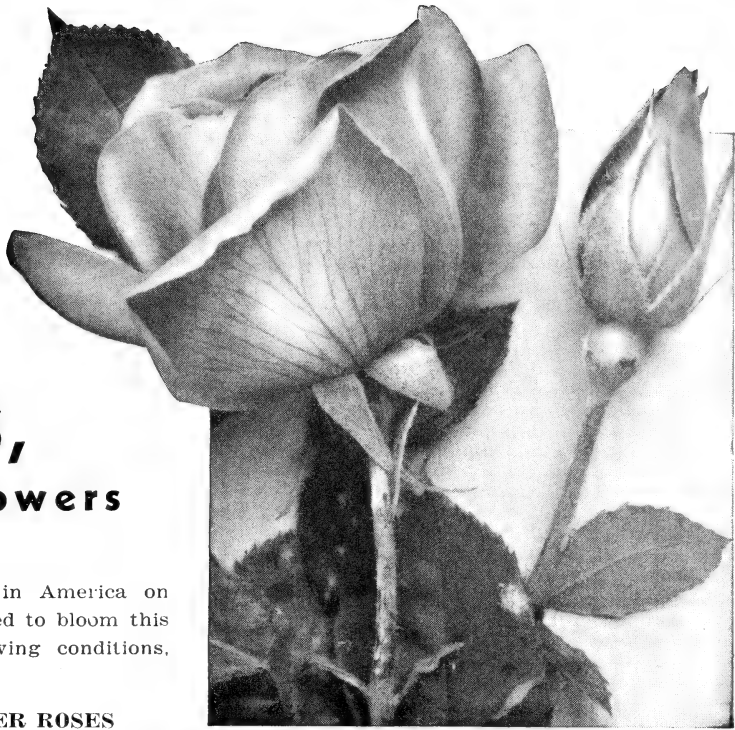
ONE GRADE—THE BEST

AMI QUINARD—Long pointed, blackish garnet bud opening to a loose, semi-double fragrant bloom.

AUTUMN—A combination of deep burnt orange and pink, streaked with red.



Autumn



Souvenir de Jean Soupert

BRAZIER—Beautiful pointed buds of burnt-orange open to a dazzling flower of flame and scarlet.

BRIARCLIFF—Handsome flowers of bright rose-pink, shading lighter at outer petals. Fine for cutting.

CALEDONIA—Long, pointed buds open to double, high-centered, pure white flowers. Moderately fragrant.

CECIL—The best single yellow. Very glossy foliage. Intense yellow. Medium height.

CECIL WALTER—Extremely long bud, soft coral pink, flushed copper, overcast gold. One of the most beautiful roses in this color and the only one that is black spot resistant. It is very worth while.

CHRISTOPHER STONE—Scarlet crimson that does not blue and is vigorous. Beautifully waved petals, long pointed buds. A real sensation and the heaviest blooming red in existence.

CATALONIA—A new Spanish rose. The outer petals a bright vermilion red, shading to gold at base. Free blooming, good foliage.

CATHERINE KORDES—Large, long-pointed blood-red buds, opening to a lasting glowing scarlet bloom with a shading of deep pink.

CONDESA DE SASTAGO—A brilliant bi-colored Spanish rose. Large cup-shaped flowers, with glowing scarlet inside of petals and intense bright yellow on the outside. Fragrant.

CYNTHIA—Immense, double flowers of dazzling scarlet shading to a deeper red as they develop; deliciously fragrant and long lasting when cut.

DAINTY BESS—Single-crinkled petals of apple blossom pink; dark stamens.

DAME EDITH HELEN—Pointed buds, opening slowly to large blooms of brilliant pink, which are fully double.



Joanna Hill

DUQUESA DE PENARANDA—In cool weather salmon apricot, in hot weather light salmon pink.

E. G. HILL—Long red buds of perfect form, opening to double high-centered flowers of dazzling scarlet.

EDITH MARY MEE—

EDITOR McFARLAND—Long pointed pink buds with a glow of amber and a paler edge. Excellent for cutting.



Briarcliffe

ETOILLE DE HOLLANDE—One of the most popular brilliant crimson red Roses. Beautiful oval buds; large double flowers.

GIPSY LASS—Double fragrant flowers of rich scarlet crimson with blackish shadings.

GIRONA—A rose with a color combination of turkey red and golden yellow. Buds are long and pointed; very fragrant.

GOLDEN RAPTURE—Beautifully formed flowers of pure yellow, which do not fade. A splendid variety for cutting and for bedding.

GLOWING CARMINE—A wonderful new rose well described by its name. A free bloomer.

GRENOBLE—Crimson buds borne on long stems, opening to large, globular fragrant flowers of brilliant red.

HEINRICH WENDLAND—Large, long pointed buds and very large double full high-centered flowers of unfading nasturtium red. Reverse of the petals deep golden yellow.

HINRICH GAEDE—The richest mixed color today. Apricot-orange-scarlet. Glossy foliage. Very popular.

H. C. YOUNG—Well shaped bud, salmon pink blooms. Very vigorous. Glossy foliage. Undoubtedly one of the very best new roses.

ISABELLE—Largest single rose. Orange carmine to coral pink.

JOANNA HILL—A charming orange-yellow, vigorous growing, free blooming, fragrant rose.

K. A. VICTORIA—A favorite old white rose with shapely pointed buds. Exquisitely perfumed.

KAREN POULSEN (H. Poly.)—Large single scarlet-crimson. Very showy. Comes in huge trusses in the fall. One of the most popular red H. Polys.

KATHERINE PECHTOLD—Beautifully pointed buds and fairly full blooms with reflexed petals; soft coppery-orange flushed old gold.

LESLIE DUDLEY—Slender buds opening to perfectly formed flowers. A blend of coral-pink, yellow and salmon. A wonderful cut flower.

LORD LONSDALE—High centered buds, full blooms, lasting, rich yellow.



Condesa de Sastago

LUCIA ZULOGA—A beautiful bud and semi-double flower of deep brownish scarlet with a gold undertone. A color different from any other rose.

MAX KRAUSE—The long pointed bud is a reddish-orange, opening to a large flower of golden yellow with fine substance.

McGREGDY'S IVORY—Long pointed buds opening to a perfectly formed white flower.

McGREGDY'S PEACH—A beautiful yellow rose, splashed with pink.

McGREGDY'S YELLOW—Large, bright buttercup yellow flowers. Every bloom perfect.

MME. JOSEPH PERRAUD—Very long bud of coppery buff. Very vigorous. Of the same type as Countess Vandal, consequently will continue to be a heavy prize winner.

MME. CECILE BRUNNER—Polyanthus Rose—A dainty variety with small, double soft flesh-pink blooms blended into a golden base.

MME. JULES BOUCHE—A vigorous growing double white rose.

MME. JULES GUERIN—An exceptionally large fragrant, well formed double flower. The long shapely bud when first expanding is golden yellow, passing to creamy yellow as it develops. Very vigorous and free flowering.

MRS. E. P. THOM—Perfectly formed buds of a rich deep lemon yellow. A grand fragrant garden rose.

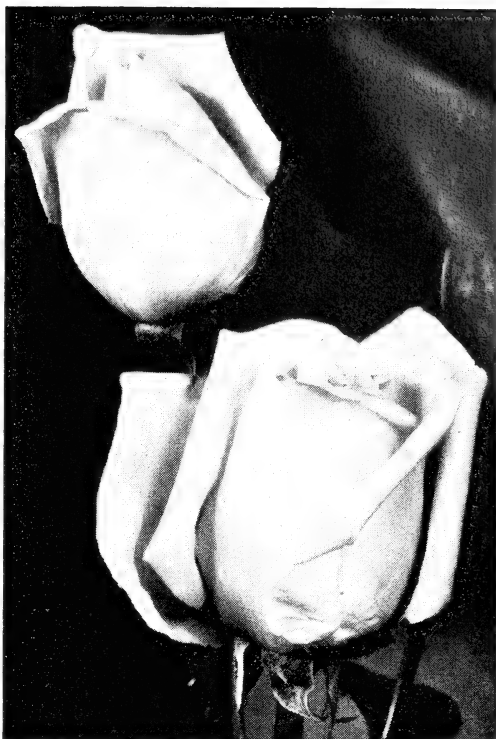
MRS. P. S. DU PONT—Medium sized, long pointed buds of reddish-gold, opening to semi-double flowers of golden yellow.

MRS. SAM McGREGDY—Large double bloom of orange salmon, with a suffusion of gold. Strong healthy grower.

PERFUME—Large, fragrant flowers of brilliant flame red. Beautiful buds. Strong stems.

PICTURE—Well shaped buds and medium-sized fragrant, rose-pink flowers. Strong, vigorous plants almost constantly in flower.

PINK DAWN—Deep rose buds opening to lovely pink blooms tinted with orange at the base of the petals. Sweetly fragrant, full double.



McGredy's Ivory

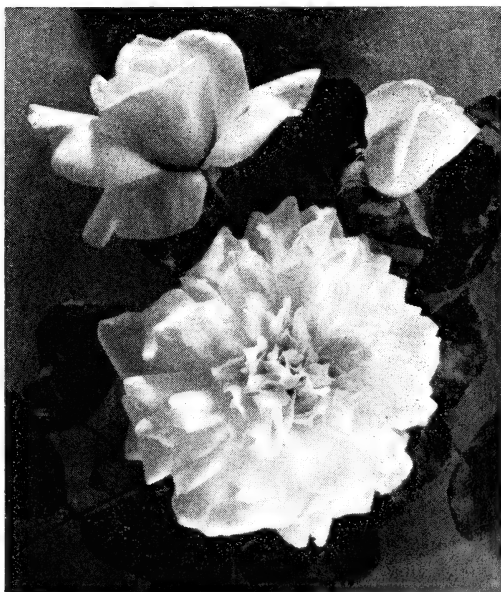
PRES. H. HOOVER—A glorious rose with charming color combinations of cerise-pink, flame, scarlet and gold. A very thrifty bush.

ROSE BERKLEY—An attractive Salmon Pink.

ROUGE MALLERIN—Pointed buds of brilliant red open to blooms of glowing scarlet. Petals resemble pieces of rich velvet. Exquisitely perfumed.



Pres. Hoover



Snowbird

PLANTING CHART

This convenient planting chart gives the correct planting distance at which various fruit trees should be set. It also shows the number of trees, at various distances, that can be planted per acre.

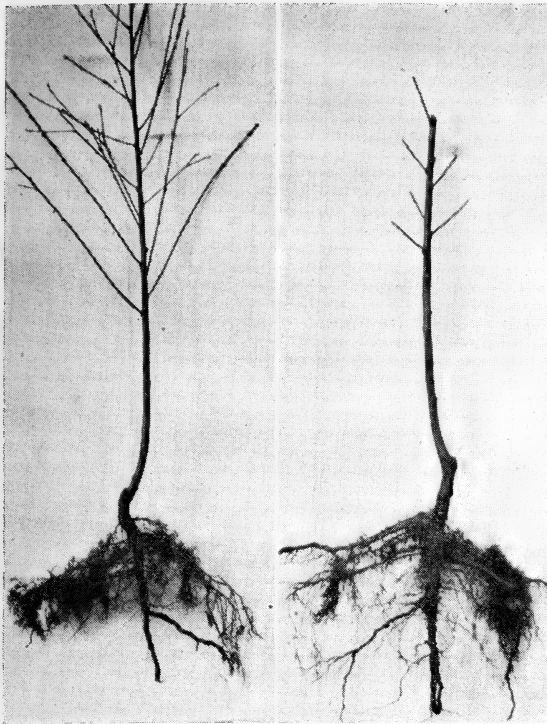


Figure 1

A 4 to 6 ft. Peach Tree.
Ready for delivery.

Figure 2

A 4 to 6 ft. Peach Tree.
Trimmed ready to plant.

Number of shrubs or Plants for an Acre			Suitable Distance for Planting	
No. Feet Apart	Square Method	Tri-angle Method	Number Feet Each Way	
1 x 1	43,560	50,300	Apples	25 to 35
2 x 2	10,890	12,575	Pears	18 to 25
3 x 3	4,840	5,890	Cherry, Sweet	25 to 35
4 x 4	2,722	3,145	Cherry, Sour	20 to 25
5 x 5	1,742	2,010	Plums	18 to 25
6 x 6	1,210	1,600	Prunes	18 to 25
7 x 7	888	1,020	Peaches	18 to 25
8 x 8	690	785	Apricots	18 to 25
9 x 9	537	617	Nectarines	16 to 21
10x10	435	505	Quince	12 to 13
11x11	360	414	Almonds	12 to 18
12x12	302	349	English Walnuts	40 to 60
13x13	257	295	Filberts	20 to 25
14x14	222	255	Currants	3 to 7
15x15	193	222	Gooseberries	4 x 8
16x16	170	190	Raspberries	3 x 8
17x17	150	172	Blackberries	5 x 8
18x18	134	158	Strawberries:	
19x19	120	138	Field:	
20x20	103	125	18 to 24" x 3 to 3 1/2'	
22x22	90	104	Garden	1 x 2 ft.
24x24	76	88	Grapes	8 x 10 ft.
25x25	69	80	Asparagus	8" x 3'
27x27	60	69	Hedge Plants:	
30x30	43	55	Single Row	6 in.
33x33	40	46	Double Row	12 in.
35x35	35	40	(Rows 1 ft. apart)	
36x36	33	38		
40x40	27	31		

ONLY ONE QUALITY — THE BEST

We offer no untried varieties, each has a record of proven production.

PLANTING SUGGESTIONS

We are interested in your success with every tree or plant we send out; we exercise the greatest care to place every item in the hands of our customers in the best possible condition, and in order to furnish some precautions and provide for complete satisfaction, we give a few hints on such points as are most essential.

TIME TO PLANT—Trees and plants usually become dormant about the 1st of November, and may be planted throughout the fall, winter and spring months. Fall and winter planting is preferred for the reason that the roots become established during the winter months, and are ready to make a vigorous growth when warm weather begins. However, excellent results are obtained with early spring planting.

CARE OF TREES ON ARRIVAL—Unless you are prepared to plant them immediately upon arrival, dig a trench large enough to accommodate the roots; cut the bottom string, and spread the roots carefully, firming the soil about them. **DO NOT PERMIT THE ROOTS TO DRY OUT OR FREEZE.**

PREPARING TREES FOR PLANTING—Don't fail to cut the top back (see illustration). This is necessary in order to balance the top with the loss of roots which always takes place when a tree is dug from the nursery. Trim each root back about one-half inch or so with a sharp knife, and cut off all broken or bruised roots.

PLANTING—Dig the hole larger than is necessary to admit all the roots in their natural position; then having the tree pruned as directed, hold it in an upright position, and shovel the soil, carefully putting the finest and best dirt from the surface in among the roots, bringing every root in contact with the soil, firming gently with the foot. The tree should be planted about the same depth it was in the nursery row; this may be determined by the change of color in the bark.

Commercial and natural fertilizers are valuable when properly used. Do not let strong fertilizers come in direct contact with the bare roots.

ILLUSTRATED PLANTING INSTRUCTIONS SENT WITH EVERY ORDER

Planting Guide and Successful Culture of FILBERTS

MAKE YOUR PRESENT LAND WORTH \$1000 TO \$2000 PER ACRE

The following facts and suggestions are earnestly offered to prospective planters of Filbert Trees, and as a successful guide to producing a profitable grove.

Ideal soil and climatic conditions found in certain parts of Oregon, Washington, California and British Columbia have proven to be exceedingly well adapted to the culture of Filberts. Many groves in these areas planted in the last ten to thirty years have proven very profitable as commercial investments for their owners. Regular bearing habits and heavy yields make them favorable to plant. They enjoy an amazingly strong market position, placing them at the top as a farm crop. Young groves at five years old produce a paying crop. Reported yields of 25 to 30 lbs. on 8 year trees, 30 to 40 lbs. on 10 year trees, 60 lbs. on 15 year, and as much as 100 lbs. and more on 25 year old trees, would positively indicate that they are paying profits far in excess of ordinary farm crops.

The filbert industry is young and future possibilities are immense. This growing horticultural enterprise is past the stage of experimentation. Definite methods of planting, pruning, cultivation, harvesting and marketing, have been successfully developed. Consumption of filberts in the United States in the past few years has made rapid strides and today is consuming more than 30 million pounds annually and which amount is mostly imported, showing a great field for expansion of the filbert industry on this coast. The metropolitan centers of the East and Middle West have tasted our Western grown nuts in the last few years and brokers from those sections flood our nut marketing organizations with early orders to insure securing a highly flavored filbert for their trade. The quality of the Western grown filbert is far superior to the foreign filbert imported chiefly from Sicily, England, France and Italy. European competitors are compelled to pay 5 cents to 10 cents per pound tariff. Their new crop does not reach us in time to catch our holiday season and is often stale and rancid on arrival. Rapid growing co-operative nut selling organizations in Oregon and Washington are ready to take care of your crop.

Filberts are used by large manufacturing industries in cakes, cookies, candies, bread and ice cream, as well as sold daily as a healthful food to an ever increasing appetite of the nut consuming American. They are a healthy nut, rich in flavor, easy to crack, clean, readily digested and high in food value.

Adaptability

Every farmer, orchardist, berry grower, poultryman and small home owner in the Northwest should have some filberts planted at least for his own use. The poultryman will find the filbert a very convenient and non-perishable crop to have growing in his poultry yard. The farmer having land suited to their culture can well set aside a small acreage for their growing. They will prove to be his best investment. Coming into production at an early age and requiring only limited capital to bring on to a point where they are productive and paying good dividends at four and five years and doubling that production rapidly, they can well be considered a good investment for the thrifty laborer, owning land, who is seeking a safe investment to take care of his needs in later years. Bankers, professional men and merchants find them a safe investment. Berry growers often use the filbert as a follow-up crop when production slows down with their berry plants. Planting them at the same time as the berries, they find them in good production when the berries run out. This works as a double investment for the grower.

Hardiness

Filberts adapt themselves to weather conditions far better than any other farm crop. Untimely rains do not affect their winter and early spring blooming habits, as often occurs with many fruits. Fall rains do not injure this hardy nut at harvest time. Crop failures are unknown where properly pollenized. In Oregon and Washington filbert trees have withstood temperatures of 15 to 20 degrees below zero and produced crops the following spring. To date we do not have any serious pests to cause excessive spraying. Filbert trees in England are still bearing at 150 years old.

Soils

The filbert will, no doubt, adapt itself to a greater variety of soils than most trees grown for commercial production. They, however, respond to good soil and extra cover cropping with vetch, rye and good barnyard fertilizer, or commercial fertilizer. The ordinary heavy valley loams, rolling shot or loam soils, and sandy river bottoms found in Western British Columbia, Washington, Oregon and parts of California, will produce abundant crops. Many fine groves are found adjacent to the Canadian border at Lynden and Everson, Washington. Also at Everett, Bellingham, Sedro Woolley, Seattle, Tacoma, Chehalis and throughout Clark County, Washington, are found many fine productive groves and trees. Throughout the Willamette Valley in Oregon are found many commercial groves which are very profitable. California plantings up to San Francisco and in the mountainous sections near Nevada City, but filberts will thrive in many sections of California and bear heavy, profitable crops.

Filberts respond to cultivation and thrive best where water tables are low and should not be planted on sour, heavy soil.

Production

Filberts often set on trees planted the first and second year, proving them to be very eager producers. Before entering into this subject we wish to state that soil fertility, cultivation and pruning will govern production to a large extent. Six year trees often produce 5 to 8 pounds of nuts. Seven year trees in our own grove have produced 22 pounds, but averaged around 14 pounds to the tree per acre. Yields reported from various growers in the Willamette valley show that 9 to 11 year trees vary from 15 to 35 pounds per tree. The scion wood for our grafted filbert stock is taken from trees with a record of 45 to 60 pounds in their 12th year. Mature trees have borne more than 100 pounds in Oregon. At prices far below the average now received per pound by Oregon filbert growers, we consider that they would still be a safe and profitable investment. More than 4300 pounds were taken from an acre and a quarter at Linneman Junction, near Portland. Cost of production is very low compared with many horticultural crops. No expensive machinery, sprayers, driers, trays, or ladders are needed in the production of filberts. Rain nor frosts have any effect on this winter blooming crop. They have withstood very severe weather at blooming time and bore heavy crops. Filberts fall to the ground early in the fall and are picked up and stored in boxes, where good air circulation can take place. We suggest that trees be kept in tree form, as this will be a great aid in cultivation.

Propagation

We offer two distinct types of Nursery Grown Filbert Trees. Each method carries certain distinct advantages adaptable to certain soil conditions in various sections along the coast. We will gladly aid you in selecting the right root stock for your locality.

Tip Layered and Heavy Nursery Grown Transplanted Filbert Trees

Transplanted filbert trees are secured in our nurseries by lining out so-called tip layers in the nursery row. The roots of this lining out stock are pruned back heavily before planting, in the nursery row, to eliminate as far as possible all the old root, which causes undue sprouting or suckering at the base of the tree for many years to come, after planting has been made in your orchard. However, we assure you that if suckers are properly taken off of the base of the tree in your orchard during the first ten years of rapid growth, you will have a grove more or less free from base sprouting. Do not be misled by unscrupulous nurserymen who state that their tip layered or transplanted filbert trees will grow an orchard free from suckers. It is not true.

Tip layered trees are taken from the mother tree the first or second year, depending upon the root system obtained. We consider that better root growth of highly distributed laterals will be obtained if this so-called tip layered stock is lined out in the nursery row for one or two years. However, we offer these to planters at a saving in price. Many of the present profitable groves of filberts on the Pacific slope were planted with TIP LAYERED TREES AND TRANSPLANTED NURSERY GROWN STOCK. This type of tree will produce a fine orchard and will adapt itself to most any kind of soil.

THE EXCELLENT ROOT SYSTEM OBTAINED ON OUR TREES FROM THE RICH RIVER SILT SOIL OF OUR NURSERIES IS FAR SUPERIOR TO THE ORDINARY FILBERT TREE OFFERED.

Please refer to page 12 for prices of trees.

SPECIAL NOTE TO PLANTERS

Peculiar blooming habits of filberts make it necessary to plant, as pollenizers, different sorts of pollenizers with Barcelona and DuChilly when using either of these for main commercial plantings. By using more than one sort you extend your pollen period over a longer season, thereby insuring a much heavier yield, catching both the early and late blooms of your commercial sort. This feature is important.

POLLENIZING CHART

The letter "X" denotes your commercial variety.

The letter "P" denotes proper position for placing all pollenizers.

X	X	X	X	X	X	X	X	X	X	X	X
X	P	X	X	P	X	X	P	X	X	P	X
X	X	X	X	X	X	X	X	X	X	X	X
X	X	X	X	X	X	X	X	X	X	X	X
X	P	X	X	P	X	X	P	X	X	P	X
X	X	X	X	X	X	X	X	X	X	X	X

The above chart is given as a guide only to planters who do not wish to take the matter up directly with us. On large commercial plantings of either Barcelona, DuChilly or Brixnut we supply individual charts to suit the planter's personal planting after being staked out. Write us for yours.

Distance for Planting

Filbert trees should be planted 20 feet by 20 feet either the square or diagonal method. The square method requires about 108 trees to the acre. Add 15 per cent for the diagonal method. On heavy, rich bottom soil of exceptional fertility it might be well to plant 70 trees to the acre at 25 feet each way. DuChilly trees are sometimes set commercially at 16 feet each way, owing to their not attaining as large a size as the Barcelona or Brixnut trees.

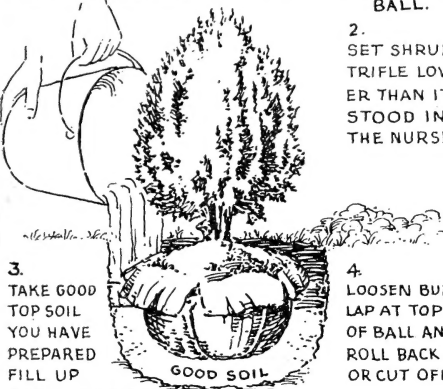
CAREFUL PERSONAL SERVICE OFFERED FREE TO ALL COMMERCIAL PLANTERS ON APPLICATION. WE CONTRACT PLANTING OF ALL TYPES OF ORCHARDS AT COST.

PROTECT YOUR TREES

The Trunks of Fruit and Nut trees should be protected from the sun rays the first year or two; sunburn may lead to serious injury. Protection may be given by placing a stake on the south side, or we offer Tree Protectors for this purpose. (Page 3).

HOW TO PLANT EVERGREENS

1. DIG A HOLE ONE FOOT LARGER AND DEEPER THAN THE BALL OF EARTH ON YOUR EVERGREEN. PROVIDE GOOD, LOAMY TOP SOIL TO FILL AROUND BALL.



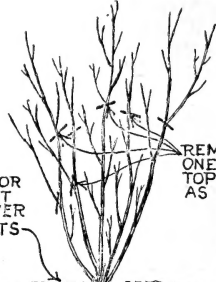
2. SET SHRUB TRIFLE LOWER THAN IT STOOD IN THE NURSERY.

3. TAKE GOOD TOP SOIL YOU HAVE PREPARED FILL UP AROUND BALL PACK FIRMLY WITH FEET OR SETTLE BY FILLING HOLE WITH WATER.

4. LOOSEN BURLAP AT TOP OF BALL AND ROLL BACK OR CUT OFF.

5. THEN FILL HOLE WITH SOIL. PACK FIRMLY AND LEAVE TOP OF GROUND COVERED WITH LOOSE EARTH, OR MULCH WITH STRAWY, WELL-ROTTED MANURE.

PUT MANURE OR FERTILIZER AT SURFACE NEVER NEXT TO ROOTS



REMOVE ABOUT ONE THIRD OF TOP GROWTH AS SHOWN

DIG HOLE LARGE TO TAKE ALL ROOTS WITHOUT BENDING

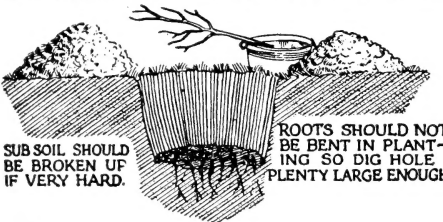
BRUISED OR BROKEN ENDS OF ROOTS CUT OFF CLEAN

SPADE SOIL DEEP AND MELLOW

PACK FINE SOIL FIRMLY AROUND ROOTS SETTLING WITH WATER

How to Plant a Tree

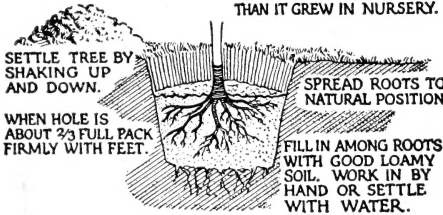
SET TREE IN TUB OF WATER WHILE DIGGING HOLE.



SUB SOIL SHOULD BE BROKEN UP IF VERY HARD.

ROOTS SHOULD NOT BE BENT IN PLANTING SO DIG HOLE PLENTY LARGE ENOUGH

SET TREE TRIFLE DEEPER THAN IT GREW IN NURSERY.

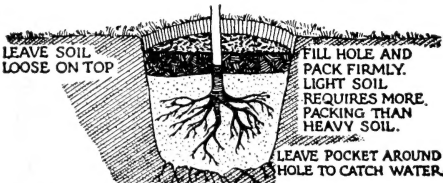


SETTLE TREE BY SHAKING UP AND DOWN.

WHEN HOLE IS ABOUT 2/3 FULL PACK FIRMLY WITH FEET.

SPREAD ROOTS TO NATURAL POSITION.

FILL IN AMONG ROOTS WITH GOOD LOAMY SOIL. WORK IN BY HAND OR SETTLE WITH WATER.



LEAVE SOIL LOOSE ON TOP

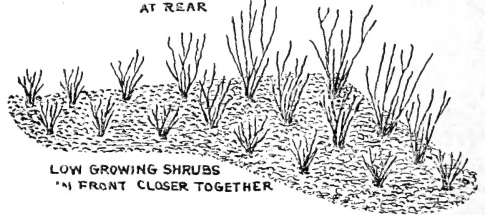
FILL HOLE AND PACK FIRMLY. LIGHT SOIL REQUIRES MORE PACKING THAN HEAVY SOIL.

LEAVE POCKET AROUND HOLE TO CATCH WATER.

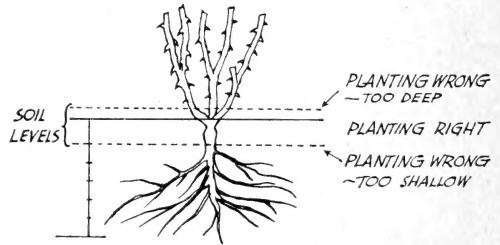
IMPORTANT: WE DO NOT ENCOURAGE THE USE OF MANURE. IF WELL DECAYED AND MIXED WITH SOIL IT SHOULD BE USED ONLY ON THE TOP.

How to Plant Shrubs

GET TALL GROWING SHRUBS AT REAR

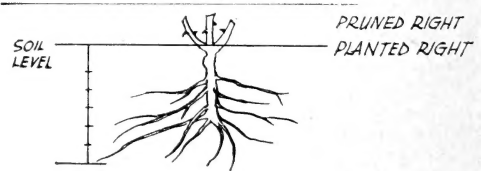


LOW GROWING SHRUBS IN FRONT CLOSER TOGETHER



PLANTING WRONG - TOO DEEP

PLANTING WRONG - TOO SHALLOW



PRUNED RIGHT PLANTED RIGHT

YOU CAN PLANT OUR STOCK WITH SAFETY. ORDER TODAY
Illustrated Planting Instructions Sent with Every Order



Rouge Mallerin



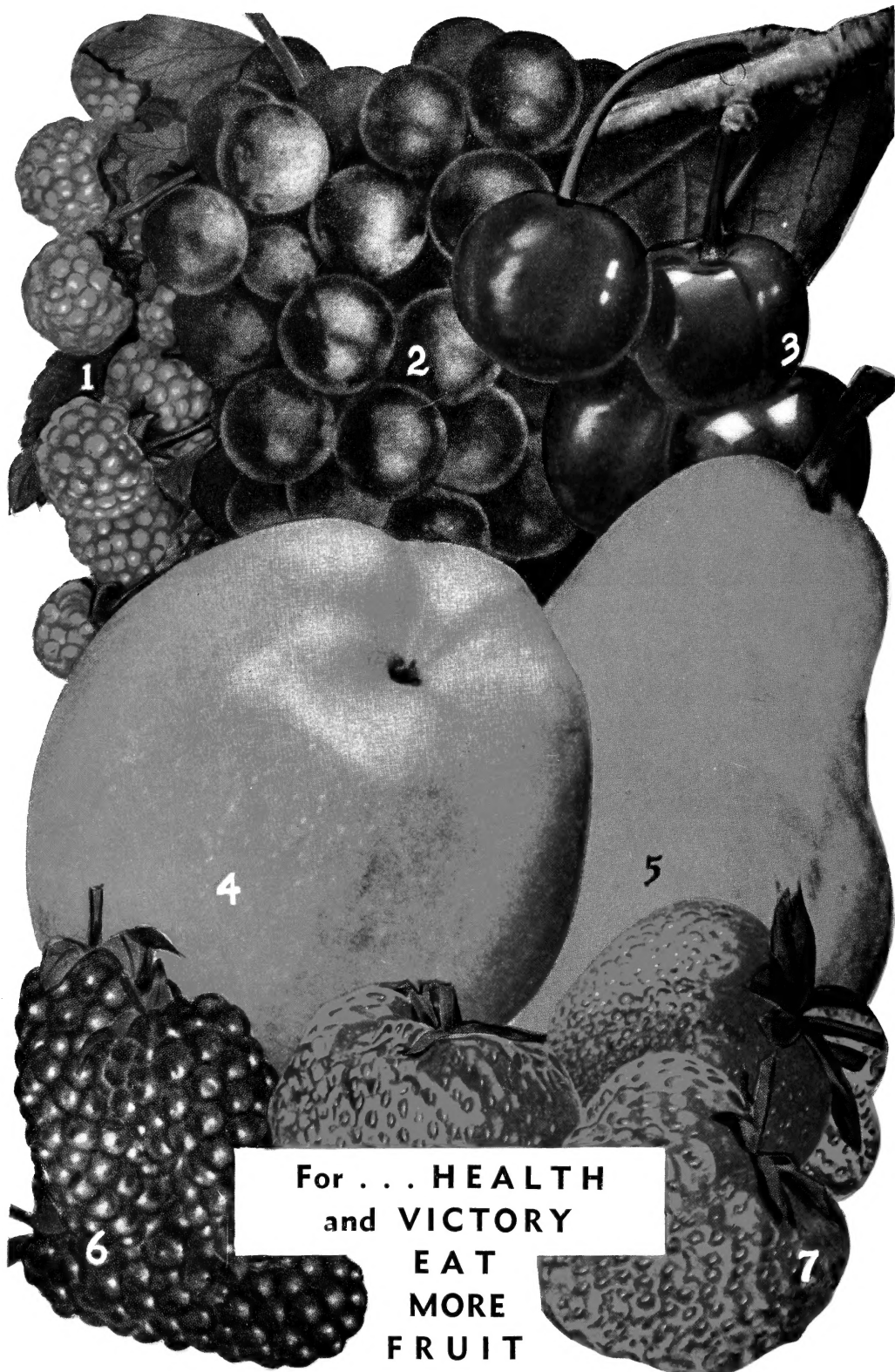
Picture



Pink Dawn



Condessa de Sastago



For . . . HEALTH
and VICTORY
EAT
MORE
FRUIT

CARLTON NURSERY COMPANY

Forest Grove, Oregon